

Shown in Mahogany

FLEXSTEEL®
CONTRACT

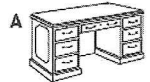
7350 Governor's Collection Traditional Laminate Furniture

- Wood accent moldings, recessed modesty panels and swinging bail hardware
- Top surfaces are durable, wear-resistant, high-pressure laminate
- All drawers feature ball-bearing slides with fully extending file drawers for easy access
- File drawers accommodate letter or legal sized hanging folders
- Meets/exceeds applicable ANSI/BIFMA standard
- Contains 30%-80% recycled content, 10%-20% post-consumer materials
- Manufacturer's limited lifetime warranty

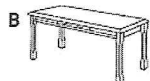


A. Double Pedestal Desks
Features a center drawer with central locking and pedestals with a pull-out writing board.

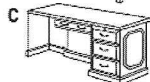
72"W x 36"D x 30"H, Shpg. Wt. 292 lbs.
DMI 735036‡ Mahogany **2994.00-EA**
60"W x 30"D x 30"H, Shpg. Wt. 248 lbs.
DMI 735030‡ Mahogany **2048.00-EA**



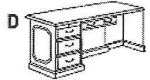
B. Table Desk
72"W x 36"D x 30"H, Shpg. Wt. 175 lbs.
DMI 735088‡ Mahogany **1562.00-EA**



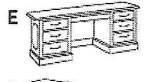
C. Right Pedestal Desk
72"W x 36"D x 30"H, Shpg. Wt. 257 lbs.
DMI 735080‡ Mahogany **1988.00-EA**



D. Left Pedestal Desk
72"W x 36"D x 30"H, Shpg. Wt. 257 lbs.
DMI 735070‡ Mahogany **1988.00-EA**



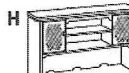
E. Kneespace Credenza
Features box/file drawer pedestal configuration. Pull-out keyboard with flip down front.
66"W x 20"D x 30"H, Shpg. Wt. 174 lbs.
DMI 735021‡ Mahogany **1997.00-EA**



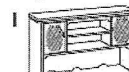
F. Right Single Pedestal Credenza
72"W x 21"D x 30"H, Shpg. Wt. 177 lbs.
DMI 7350571‡ Mahogany **1744.00-EA**



G. Left Single Pedestal Credenza
72"W x 21"D x 30"H, Shpg. Wt. 177 lbs.
DMI 7350581‡ Mahogany **1744.00-EA**



H. Overhead Hutch For Single Pedestal Credenza
66"W x 13"D x 46"H, Shpg. Wt. 165 lbs.
DMI 735062‡ Mahogany **1779.00-EA**



I. Overhead Hutch For Kneespace Credenza
60"W x 13"D x 46"H, Shpg. Wt. 157 lbs.
DMI 735047‡ Mahogany **1562.00-EA**



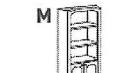
J. Bridge
50"W x 24"D x 30"H, Shpg. Wt. 83 lbs.
DMI 735059 Mahogany **747.00-EA**



K. 4-Drawer Lateral File
36"W x 22"D x 54"H, Shpg. Wt. 259 lbs.
DMI 735017‡ Mahogany **2329.00-EA**



L. 2-Drawer Lateral File
Equipped with anti-tip device for safety.
32"W x 20"D x 30"H, Shpg. Wt. 127 lbs.
DMI 7350152‡ Mahogany **1289.00-EA**



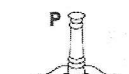
M. Bookcase With Doors
30"W x 14"D x 74"H, Shpg. Wt. 152 lbs.
DMI 735009‡ Mahogany **1277.00-EA**



N. Open Bookcase
30"W x 14"D x 74"H, Shpg. Wt. 148 lbs.
DMI 735008‡ Mahogany **1165.00-EA**



O. Round Conference Table Tops
48" Diameter, Shpg. Wt. 62 lbs.
DMI 7350016‡ Mahogany **1025.00-EA**
42" Diameter, Shpg. Wt. 45 lbs.
DMI 7350011‡ Mahogany **812.00-EA**



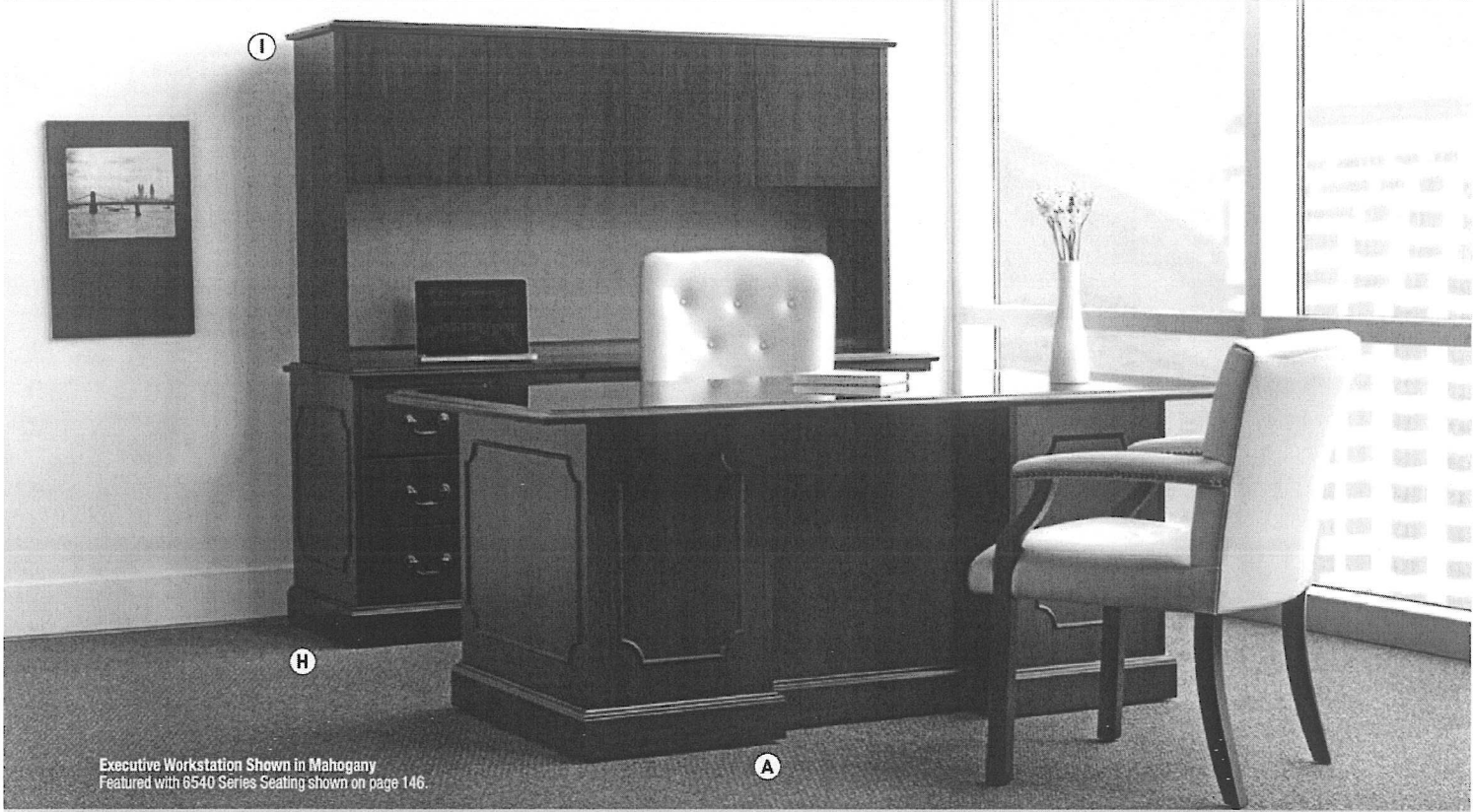
P. Queen Anne Base
28 1/2"H, Shpg. Wt. 34 lbs.
DMI 7350002‡ Mahogany **429.00-EA**

Assembly needed. Please call for details.

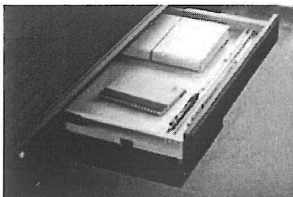
‡ Cannot be shipped UPS.
‡‡ Cannot be shipped UPS Air. LA

FIND MORE ONLINE

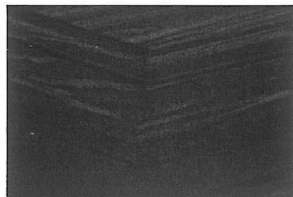
FURNITURE
Office Suites - Traditional Laminate



Executive Workstation Shown in Mahogany
Featured with 6540 Series Seating shown on page 146.



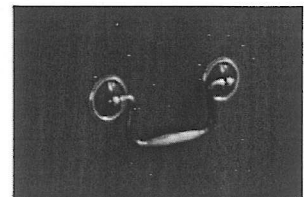
Desk Center Drawer



Traditional Edge



Pull-Out Writing Shelf



Antique Brass Handles



HON.

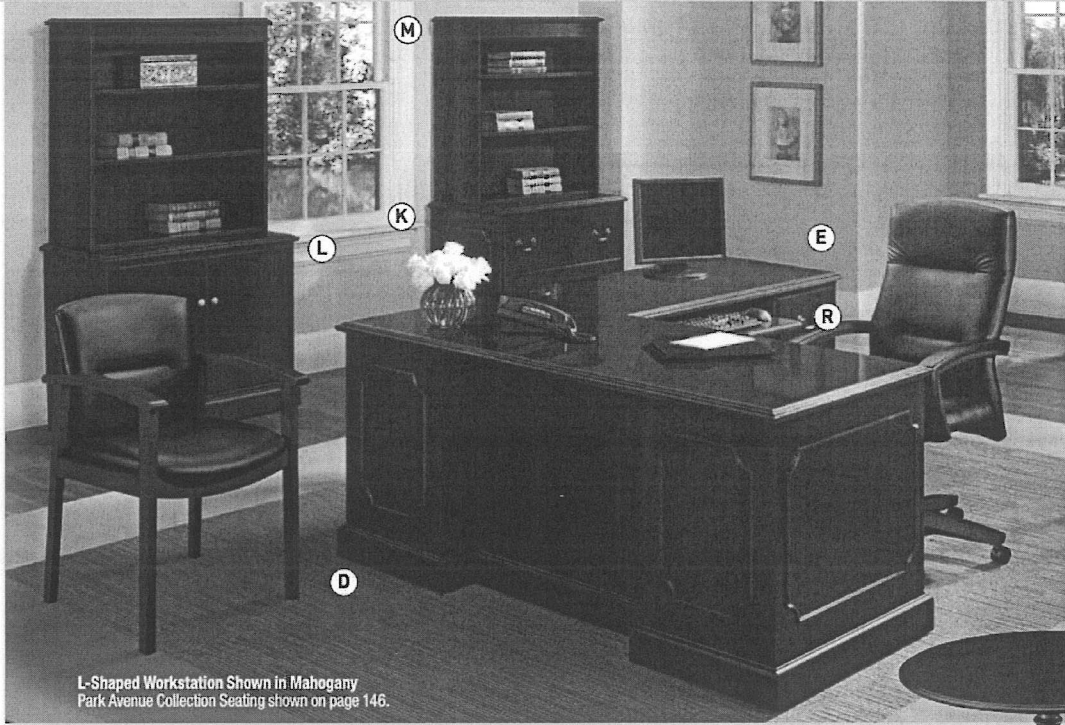
94000 Series Traditional Laminate Furniture Ⓢ

- High-gloss worksurfaces are contract-grade, scratch-, spill- and stain-resistant laminate
- Styling includes antique brass handles and raised, decorative molding
- Central-locking center drawers on desks; locks all drawers
- Pull-out writing shelves on all desk pedestals provide extra workspace
- Drawers are equipped with smooth, quiet-action slides
- Each pedestal has one box and one file drawer that accommodates letter or legal files; hangrails are included
- Desks, credenza, returns, lateral files and storage cabinet feature HON "One Key" interchangeable core removable locks; makes re-keying quick and easy
- **SHIPS FULLY ASSEMBLED** (unless noted) to ease and speed installation
- Contains 38% recycled content
- Meets or exceeds ANSI/BIFMA and ISTA performance standards
- Backed by the HON Full Lifetime Warranty



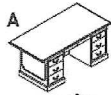
6540 Series Seating shown on page 146.

FURNITURE
Office Suites – Traditional Laminate



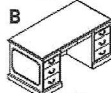
L-Shaped Workstation Shown in Mahogany
Park Avenue Collection Seating shown on page 146.

HON.



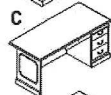
A. Conference Desk
72"W x 36"D x 29½"H, Shpg. Wt. 307 lbs.
HON 94271NN‡ Mahogany

LIST PRICE
2123.00-EA



B. Executive Desk
60"W x 30"D x 29½"H, Shpg. Wt. 284 lbs.
HON 94251NN‡ Mahogany

1999.00-EA



C. Right Pedestal Desk
66"W x 30"D x 29½"H, Shpg. Wt. 233 lbs.
HON 94283RNN‡ Mahogany

1745.00-EA



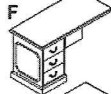
D. Left Pedestal Desk
66"W x 30"D x 29½"H, Shpg. Wt. 233 lbs.
HON 94284LNN‡ Mahogany

1745.00-EA



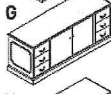
E. Right Pedestal Return
48"W x 24"D x 29½"H, Shpg. Wt. 154 lbs.
HON 94215RNN‡ Mahogany

1191.00-EA



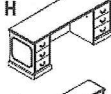
F. Left Pedestal Return
48"W x 24"D x 29½"H, Shpg. Wt. 154 lbs.
HON 94216LNN‡ Mahogany

1191.00-EA



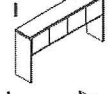
G. Credenza With Doors
72"W x 24"D x 29½"H, Shpg. Wt. 313 lbs.
HON 94244NN‡ Mahogany

2047.00-EA



H. Credenza With Kneespace
72"W x 24"D x 29½"H, Shpg. Wt. 253 lbs.
HON 94243NN‡ Mahogany

1771.00-EA



I. Stack-On Storage For 72"W Credenza
Provides 19¾" clearance from desktop.
70"W x 16¼"D x 37"H, Shpg. Wt. 175 lbs.
HON 94234NN‡ Mahogany

1278.00-EA



J. Task Light For Stack-On Storage
46½"W x 3¼"D x 1¼"H, Shpg. Wt. 12 lbs.
HON H870960 Black

228.00-EA



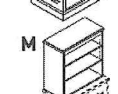
K. 2-Drawer Lateral File With Lock
37½"W x 20½"D x 29½"H, Shpg. Wt. 172 lbs.
HON 94223NN‡ Mahogany

LIST PRICE
1223.00-EA



L. Storage Cabinet With Lock
37½"W x 20½"D x 29½"H, Shpg. Wt. 165 lbs.
HON 94291NN‡ Mahogany

1096.00-EA



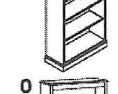
M. Bookcase Hutch For Lateral File Or Storage Cabinet
35¾"W x 14¾"D x 37"H, Shpg. Wt. 95 lbs.
HON 94210NN‡ Mahogany

819.00-EA



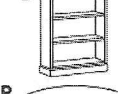
N. 5-Shelf Bookcase
35¾"W x 14¾"D x 78¾"H, Shpg. Wt. 200 lbs.
HON 94225NN‡ Mahogany

1066.00-EA



O. 3-Shelf Bookcase
35¾"W x 14¾"D x 49¾"H, Shpg. Wt. 130 lbs.
HON 94222NN Mahogany

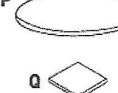
866.00-EA



P. Round Conference Table Top
48"Diameter x 1¼"H, Shpg. Wt. 66 lbs.
HON TLD46TNN‡ Mahogany
42"Diameter x 1¼"H, Shpg. Wt. 51 lbs.
HON TLD42TNN‡ Mahogany

881.00-EA

770.00-EA



Q. Queen Anne Base
28¾"H, Shpg. Wt. 40 lbs.
HON 94011N‡ Mahogany

599.00-EA



R. Keyboard Platform
21¾"W x 10"D x 1¼"H
HON 4022N Mahogany

198.00-EA

Assembly needed. Please call for details.

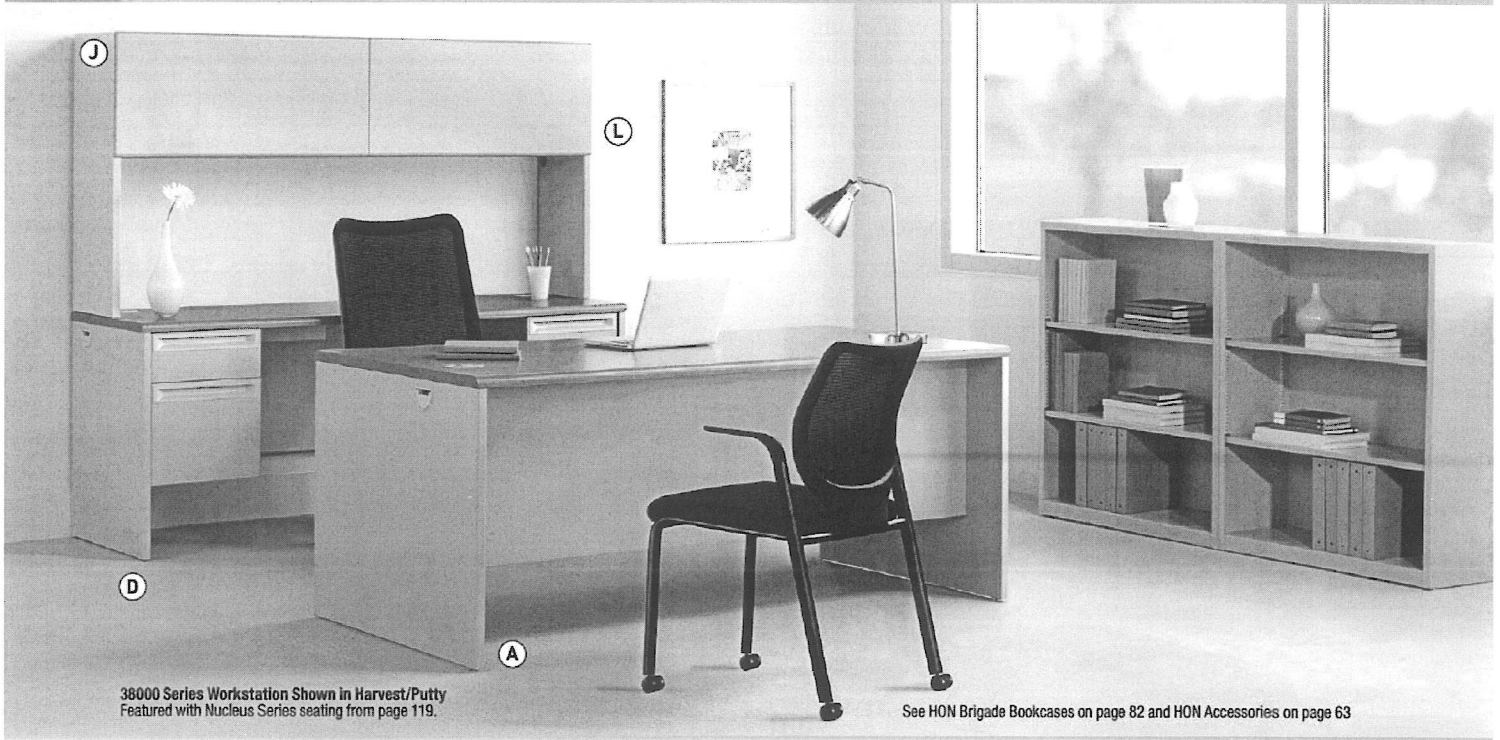
‡Cannot be shipped UPS.

‡‡Cannot be shipped UPS Air. LA

FIND MORE ONLINE



FURNITURE
Office Suites – Contemporary Steel/Laminate



38000 Series Workstation Shown in Harvest/Putty
Featured with Nucleus Series seating from page 119.

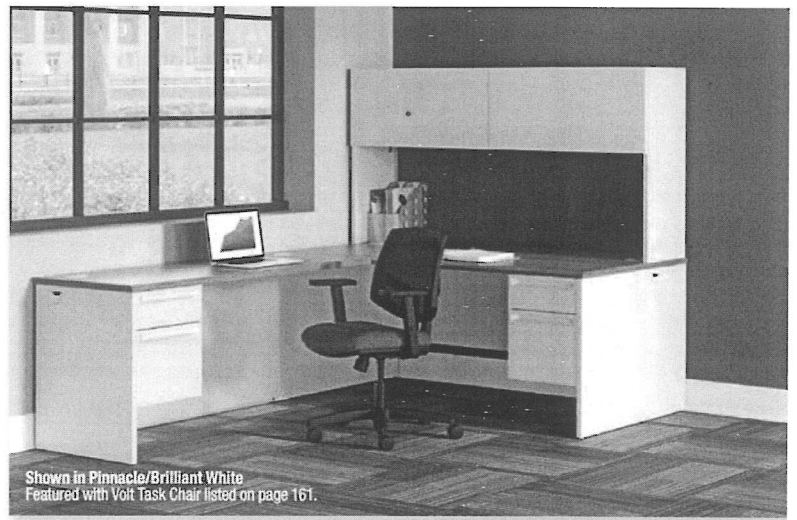
See HON Brigade Bookcases on page 82 and HON Accessories on page 63



HON.

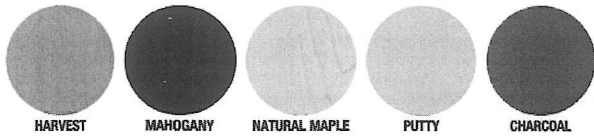
38000 Series Metal Desking

- An upscale look at a practical price
- The industry standard for metal desks-timeless style and built to last
- Curved, waterfall-shaped edge profile provides a comfortable typing surface
- Steel ball-bearing suspension in all box and file drawers
- Locks to secure files and storage; HON "One-Key" interchangeable lock design makes re-keying quick and easy
- Each piece features cable management ports and tracks that run through hidden channels for a neat, organized work environment
- Stack-on storage attaches to worksurface through wire management grommets
- Meets or exceeds ANSI/BIFMA and ISTA performance standards
- Contains 32% total recycled content
- Backed by the HON Full Lifetime Warranty



Shown in Pinnacle/Brilliant White
Featured with Volt Task Chair listed on page 161.

HON's popular 38000 Series features a high-pressure laminate top with waterfall-shaped edges. The sturdy steel body is built to best-in-class standards. Ball-bearing suspensions. Tru-fit drawer fronts. Wire management. No wonder it's America's bestselling steel desk. Call your local representative to learn more about 38000 Series.



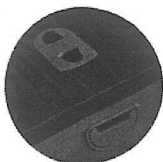
HARVEST

MAHOGANY

NATURAL MAPLE

PUTTY

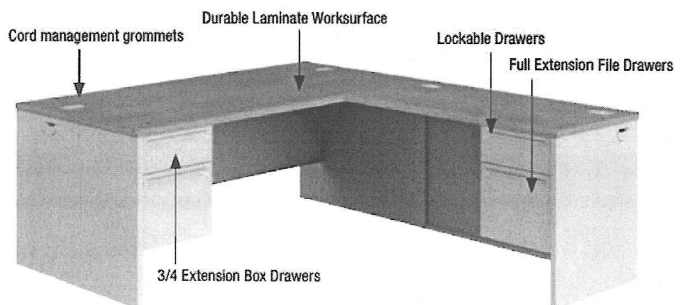
CHARCOAL



ACCESSIBLE CABLE MANAGEMENT



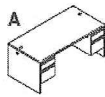
WATERFALL EDGE AND RECESSED DRAWER PULLS





HON.

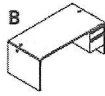
38000 Series Metal Desking



A. Double Pedestal Desks

72"W x 36"D x 29½"H, Shpg. Wt. 256 lbs.
HON 38180NS‡ Mahogany/Charcoal
HON 38180CL‡ Harvest/Putty
 60"W x 30"D x 29½"H, Shpg. Wt. 217 lbs.
HON 38155NS‡ Mahogany/Charcoal
HON 38155CL‡ Harvest/Putty

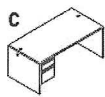
LIST PRICE
 1643.00-**EA**
 1643.00-**EA**
 1404.00-**EA**
 1404.00-**EA**



B. Right Pedestal Desks With Lock

72"W x 36"D x 29½"H, Shpg. Wt. 214 lbs.
HON 38293RNS‡ Mahogany/Charcoal
HON 38293RCL‡ Harvest/Putty
 66"W x 30"D x 29½"H, Shpg. Wt. 181 lbs.
HON 38291RNS‡ Mahogany/Charcoal
HON 38291RCL‡ Harvest/Putty
 48"W x 30"D x 29½"H, Shpg. Wt. 155 lbs.
HON 38251NS‡ Mahogany/Charcoal
HON 38251CL‡ Harvest/Putty

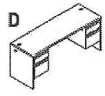
LIST PRICE
 1464.00-**EA**
 1464.00-**EA**
 1349.00-**EA**
 1349.00-**EA**
 1194.00-**EA**
 1194.00-**EA**



C. Left Pedestal Desks With Lock

72"W x 36"D x 29½"H, Shpg. Wt. 214 lbs.
HON 38294LNS‡ Mahogany/Charcoal
HON 38294LCL‡ Harvest/Putty
 66"W x 30"D x 29½"H, Shpg. Wt. 181 lbs.
HON 38292LNS‡ Mahogany/Charcoal
HON 38292LCL‡ Harvest/Putty

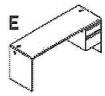
LIST PRICE
 1464.00-**EA**
 1464.00-**EA**
 1349.00-**EA**
 1349.00-**EA**



D. Credenzas With Kneespace

72"W x 24"D x 29½"H, Shpg. Wt. 172 lbs.
HON 38854NS‡ Mahogany/Charcoal
HON 38854CL‡ Harvest/Putty
 60"W x 24"D x 29½"H, Shpg. Wt. 154 lbs.
HON 38852NS‡ Mahogany/Charcoal
HON 38852CL‡ Harvest/Putty

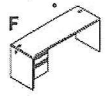
LIST PRICE
 1426.00-**EA**
 1426.00-**EA**
 1370.00-**EA**
 1370.00-**EA**



E. Right Pedestal Credenzas With Lock

72"W x 24"D x 29½"H, Shpg. Wt. 159 lbs.
HON 38856RNS‡ Mahogany/Charcoal
HON 38856RCL‡ Harvest/Putty

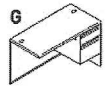
LIST PRICE
 1215.00-**EA**
 1215.00-**EA**



F. Left Pedestal Credenzas With Lock

72"W x 24"D x 29½"H, Shpg. Wt. 159 lbs.
HON 38855LNS‡ Mahogany/Charcoal
HON 38855LCL‡ Harvest/Putty

LIST PRICE
 1215.00-**EA**
 1215.00-**EA**



G. Right Pedestal Returns With Lock

48"W x 24"D x 29½"H, Shpg. Wt. 124 lbs.
HON 38215RNS‡ Mahogany/Charcoal
HON 38215RCL‡ Harvest/Putty

LIST PRICE
 885.00-**EA**
 885.00-**EA**



H. Left Pedestal Returns With Lock

48"W x 24"D x 29½"H, Shpg. Wt. 124 lbs.
HON 38216LNS‡ Mahogany/Charcoal
HON 38216LCL‡ Harvest/Putty

LIST PRICE
 885.00-**EA**
 885.00-**EA**



I. Bridges

48"W x 24"D x 29½"H, Shpg. Wt. 54 lbs.
HON 38210NS‡ Mahogany/Charcoal
HON 38210CL‡ Harvest/Putty

LIST PRICE
 491.00-**EA**
 491.00-**EA**



J. Stack-On Storage

Attaches to worksurface through wire management grommets.

72"W x 13½"D x 34½"H, Shpg. Wt. 72 lbs.
HON 386572NS‡ Charcoal
HON 386572NCL‡ Putty
 60"W x 13½"D x 34½"H, Shpg. Wt. 64 lbs.
HON 386560NS Charcoal
HON 386560NCL Putty
 48"W x 13½"D x 34½"H, Shpg. Wt. 53 lbs.
HON 386548NS Charcoal
HON 386548NCL Putty

LIST PRICE
 772.00-**EA**
 772.00-**EA**
 678.00-**EA**
 678.00-**EA**
 618.00-**EA**
 618.00-**EA**



K. Task Light

For use under 60" and 72" Stack-On Storage units.

46½"W x 3¼"D x 1½"H, Shpg. Wt. 12 lbs.
HON H870960 Black

LIST PRICE
 228.00-**EA**



L. Flipper Doors

Equipped with HON "One Key" core removable lock.

2 Doors @ 72"W x 15"H for 72" Stack-On, Shpg. Wt. 19 lbs.
HON 387215LS Charcoal
HON 387215LL Putty
 2 Doors @ 30"W x 15"H for 60" Stack-On, Shpg. Wt. 17 lbs.
HON 386015LS Charcoal
HON 386015LL Putty
 1 Door @ 48"W x 15"H for 48" Stack-On, Shpg. Wt. 12 lbs.
HON 384815LS Charcoal
HON 384815LL Putty

LIST PRICE
 468.00-**EA**
 468.00-**EA**
 443.00-**EA**
 443.00-**EA**
 268.00-**EA**
 268.00-**EA**



M. Corner Sleeve

22½"W x 18"D, Shpg. Wt. 10 lbs.
HON 51206P Black

LIST PRICE
 131.00-**EA**



N. Center Drawers, For 72" & 60" Double Pedestal Desks

24¾"W x 14¾"D x 3"H, Shpg. Wt. 12 lbs.
HON D8S Charcoal
HON D8L Putty

LIST PRICE
 216.00-**EA**
 216.00-**EA**



O. Center Drawers, For 72" & 66" Single Pedestal Desks

19"W x 14¾"D x 3"H, Shpg. Wt. 9 lbs.
HON D2S Charcoal
HON D2L Putty

LIST PRICE
 216.00-**EA**
 216.00-**EA**



HON.

Mentor Series Metal Desking

- Radius leg design with arched drawer pulls
- Box/File drawer pedestal configuration
- Full-extension, triple-tied cradles on all file drawers provide 21" of filing capacity
- Central locking center drawer with HON "One Key" interchangeable lock
- Cord management grommets in desk
- Platinum Metallic leg on the Natural Maple/Charcoal combination or Chrome leg with the Harvest/Putty combination
- Contains 32% total recycled content
- Meets or exceeds ANSI/BIFMA and ISTA performance standards
- Backed by the HON Full Lifetime Warranty

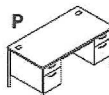
Assembly needed. Please call for details.

‡Cannot be shipped UPS.
 ††Cannot be shipped UPS Air. LA

(P)



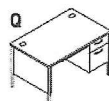
Natural Maple/
Charcoal/Platinum Metallic



P. Double Pedestal Desks

60"W x 30"D x 29½"H, Shpg. Wt. 178 lbs.
HON A88962DS‡ Natural Maple/Charcoal/Platinum Metallic
HON 88962CL‡ Harvest/Putty/Chrome

LIST PRICE
 1162.00-**EA**
 1162.00-**EA**



Q. Right Pedestal Desks

48"W x 30"D x 29½"H, Shpg. Wt. 130 lbs.
HON A88251RDS‡ Natural Maple/Charcoal/Platinum Metallic
HON 88251RCL‡ Harvest/Putty/Chrome

LIST PRICE
 949.00-**EA**
 949.00-**EA**

(Q)



Harvest/Putty/Chrome

FIND MORE ONLINE



FURNITURE
Office Suites – Contemporary Steel/Laminate



HON.

Metro Classic Series

- Wire management minimizes cable clutter
- Double pedestal desks and credenzas are equipped with two box drawers and two file drawers
- Legs ship unattached
- Features monochromatic drawer pulls
- 32% total recycled content
- Meets or exceeds ANSI/BIFMA and ISTA performance standards
- Backed by the HON Full Lifetime Warranty



Metro Classic shown in Mahogany/Charcoal
Featured with Volt Seating on page 161 and Brigade 600 Series Lateral Files on page 199.

A. Double Pedestal Desks
Central locking center drawer. 6" overhang.
72"W x 36"D x 29½"H, Shpg. Wt. 218 lbs.
LIST PRICE
HON P3276CL‡ Harvest/Putty 1390.00-EA
HON P3276NS‡ Mahogany/Charcoal 1390.00-EA
HON P3276G2S‡ Patterned Gray/Charcoal 1390.00-EA
HON P3276MOP‡ Mocha/Black 1390.00-EA

A
60"W x 30"D x 29½"H, Shpg. Wt. 186 lbs.
HON P3262CL‡ Harvest/Putty 1135.00-EA
HON P3262NS‡ Mahogany/Charcoal 1135.00-EA
HON P3262G2S‡ Patterned Gray/Charcoal 1135.00-EA
HON P3262MOP‡ Mocha/Black 1135.00-EA

B. Right Pedestal Desks
66"W x 30"D x 29½"H, Shpg. Wt. 167 lbs.
HON P3265RCL‡ Harvest/Putty 1048.00-EA
HON P3265RNS‡ Mahogany/Charcoal 1048.00-EA
HON P3265RG2S‡ Patterned Gray/Charcoal 1048.00-EA
HON P3265RMOP‡ Mocha/Black 1048.00-EA

C. Left Returns
42"W x 24"D x 29½"H, Shpg. Wt. 95 lbs.
HON P3236LCL‡ Harvest/Putty 733.00-EA
HON P3236LNS‡ Mahogany/Charcoal 733.00-EA
HON P3236LG2S‡ Patterned Gray/Charcoal 733.00-EA
HON P3236LMOP‡ Mocha/Black 733.00-EA

D. Left Pedestal Desks
66"W x 30"D x 29½"H, Shpg. Wt. 167 lbs.
HON P3266LCL‡ Harvest/Putty 1048.00-EA
HON P3266LNS‡ Mahogany/Charcoal 1048.00-EA
HON P3266LG2S‡ Patterned Gray/Charcoal 1048.00-EA
HON P3266LMOP‡ Mocha/Black 1048.00-EA

E. Right Returns
42"W x 24"D x 29½"H, Shpg. Wt. 95 lbs.
HON P3235RCL‡ Harvest/Putty 733.00-EA
HON P3235RNS‡ Mahogany/Charcoal 733.00-EA
HON P3235RG2S‡ Patterned Gray/Charcoal 733.00-EA
HON P3235RMOP‡ Mocha/Black 733.00-EA

F. Single Pedestal Desks
48"W x 30"D x 29½"H, Shpg. Wt. 142 lbs.
LIST PRICE
HON P3251RCL‡ Harvest/Putty 933.00-EA
HON P3251RNS‡ Mahogany/Charcoal 933.00-EA
HON P3251RG2S‡ Patterned Gray/Charcoal 933.00-EA
HON P3251RMOP‡ Mocha/Black 933.00-EA

G. Credenzas With Kneespace, Non-Locking
60"W x 24"D x 29½"H, Shpg. Wt. 165 lbs.
HON P3231CL‡ Harvest/Putty 1135.00-EA
HON P3231NS‡ Mahogany/Charcoal 1135.00-EA
HON P3231G2S‡ Patterned Gray/Charcoal 1135.00-EA
HON P3231MOP‡ Mocha/Black 1135.00-EA

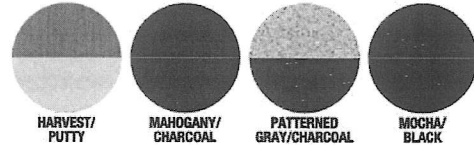
H. Stack-On Storage Units
60"W x 13½"D x 34¾"H, Shpg. Wt. 64 lbs.
HON 386560NL Putty 678.00-EA
HON 386560NS Charcoal 678.00-EA
48"W x 13½"D x 34¾"H, Shpg. Wt. 53 lbs.
HON 386548NL Putty 618.00-EA
HON 386548NS Charcoal 618.00-EA

I. Flipper Doors
Equipped with HON "One Key" core removable lock.
2 Doors @ 30"W x 15"H for 60" Stack-On, Shpg. Wt. 17 lbs.
HON 386015LL Putty 443.00-EA
HON 386015LS Charcoal 443.00-EA
1 Door @ 48"W x 15"H for 48" Stack-On, Shpg. Wt. 12 lbs.
HON 384815LL Putty 268.00-EA
HON 384815LS Charcoal 268.00-EA

HON.

34000 Series Metal Desks

- High-quality construction that works well in your heavy-usage areas
- Woodgrain laminate tops with polished chrome legs
- High-sided file drawers accommodate hanging files
- Center drawers with supply trays lock to secure all drawers
- 32% total recycled content
- Backed by the HON Full Lifetime Warranty



J. Double Pedestal Desk
60"W x 30"D x 29½"H, Shpg. Wt. 162 lbs.
LIST PRICE
HON 34962CL‡ Harvest/Putty 1084.00-EA

K. Single Pedestal Desk (not shown)
45½"W x 24"D x 29½"H, Shpg. Wt. 83 lbs.
HON 34002RCL‡ Harvest/Putty 796.00-EA

J



FURNITURE
Office Suites – Contemporary Steel/Laminate



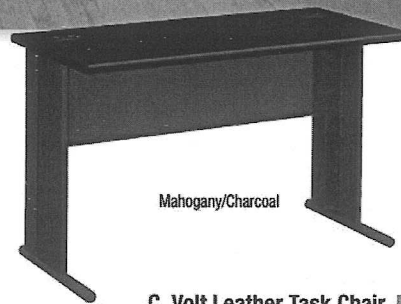
Shown in Patterned Gray/Charcoal With optional Keyboard Platform on page 63. Stack-On-Storage Unit shown on page 45 and Brigade Pedestal shown on page 210. Volt Seating shown on page 161.

HON.

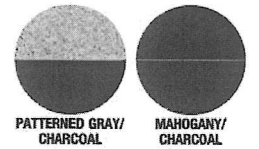
66000 Series The StationMaster



- 1 1/4" thick high-pressure laminate tops have radius edges and wire management grommets
- C-legs add stability and incorporate wire management channel to keep cords organized and out of sight
- Desks and corner desk have two wire management grommets
- Meets or exceeds ANSI/BIFMA and ISTA performance standards
- Backed by the HON Full Lifetime Warranty



Mahogany/Charcoal



PATTERNED GRAY/
CHARCOAL

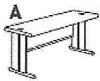
MAHOGANY/
CHARCOAL

C. Volt Leather Task Chair

26"W x 25 3/4"D x 40"H
HON 5703SB11T

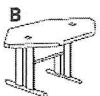
Black SofThread Leather

LIST PRICE
295.00-EA



A. Desks

72"W x 29 1/2"D x 29 1/2"H, Shpg. Wt. 129 lbs.	Patterned Gray/Charcoal	LIST PRICE
HON 66591G2S‡	Mahogany/Charcoal	922.00-EA
HON 66591NS‡		922.00-EA
60"W x 29 1/2"D x 29 1/2"H, Shpg. Wt. 113 lbs.	Patterned Gray/Charcoal	870.00-EA
HON 66571G2S‡	Mahogany/Charcoal	870.00-EA
HON 66571NS‡		
60"W x 24"D x 29 1/2"H, Shpg. Wt. 99 lbs.	Patterned Gray/Charcoal	828.00-EA
HON 66577G2S	Mahogany/Charcoal	828.00-EA
HON 66577NS		
48"W x 29 1/2"D x 29 1/2"H, Shpg. Wt. 95 lbs.	Patterned Gray/Charcoal	810.00-EA
HON 66551G2S	Mahogany/Charcoal	810.00-EA
HON 66551NS		
48"W x 24"D x 29 1/2"H, Shpg. Wt. 88 lbs.	Patterned Gray/Charcoal	771.00-EA
HON 66557G2S	Mahogany/Charcoal	771.00-EA
HON 66557NS		

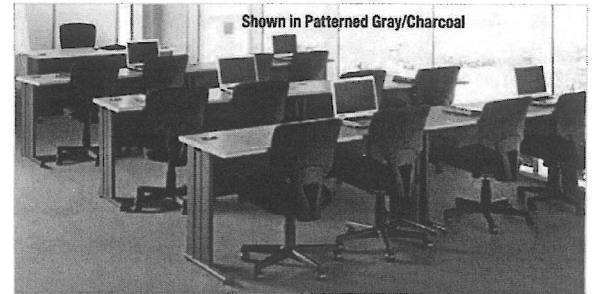


B. Corner Desks Can be used as stand-alone units, or join two desks at right angles to form L-Shaped Workstation. For use with 29 1/2" deep desks only.

66"W x 36"D x 29 1/2"H, Shpg. Wt. 104 lbs.	Patterned Gray/Charcoal	1173.00-EA
HON 66282G2S	Mahogany/Charcoal	1173.00-EA
HON 66282NS		

Assembly needed. Please call for details.

‡Cannot be shipped UPS.
‡‡Cannot be shipped UPS Air. LA



Shown in Patterned Gray/Charcoal

We have many furniture options and want to ensure you are totally satisfied with your purchase. Please contact us to discuss unique style preferences, budget and space requirements.

FIND MORE ONLINE

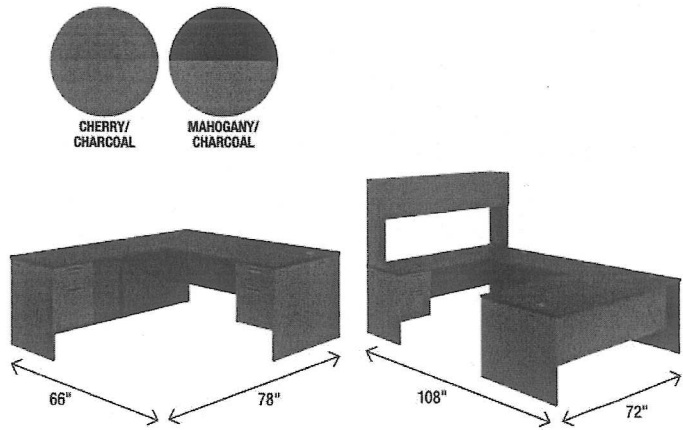


FURNITURE

Office Suites - Contemporary Steel/Laminate



97000 Series Workstation Shown in Mahogany/Charcoal. Featured with Mesh Back Seating on page 131.



L-Station Layout
66" W x 78" D x 29 1/2" H
Contains: C, G
\$1920

U-Station Layout
72" W x 108" D x 29 1/2" H
Contains: C, E, I, J, K
\$3789



97000 Series Metal Desking

- Features commercial-quality performance and components
- Durable steel chassis supports a thick 1 1/8" laminate top
- Integrated grommets for wire management
- Drawers feature ball-bearing slide suspension for easy filing
- Contains 32% recycled content and 17% post-consumer material
- Covered by Lorell Limited Lifetime Warranty



A	A. Double Pedestal Desks 72"W x 36"D x 29 1/2"H, Shpg. Wt. 214 lbs. LLR 97100‡ Cherry/Charcoal 1389.00-EA LLR 97101‡ Mahogany/Charcoal 1389.00-EA 66"W x 30"D x 29 1/2"H, Shpg. Wt. 224 lbs. LLR 97106‡ Cherry/Charcoal 1220.00-EA LLR 97107‡ Mahogany/Charcoal 1220.00-EA 60"W x 30"D x 29 1/2"H, Shpg. Wt. 217 lbs. LLR 97108‡ Cherry/Charcoal 1139.00-EA LLR 97109‡ Mahogany/Charcoal 1139.00-EA	LIST PRICE 1389.00-EA 1389.00-EA 1220.00-EA 1220.00-EA 1139.00-EA 1139.00-EA
B	B. Left Pedestal Desks 72"W x 36"D x 29 1/2"H, Shpg. Wt. 214 lbs. LLR 97112‡ Cherry/Charcoal 1373.00-EA LLR 97113‡ Mahogany/Charcoal 1373.00-EA 66"W x 30"D x 29 1/2"H, Shpg. Wt. 181 lbs. LLR 97102‡ Cherry/Charcoal 1176.00-EA LLR 97103‡ Mahogany/Charcoal 1176.00-EA	LIST PRICE 1373.00-EA 1373.00-EA 1176.00-EA 1176.00-EA
C	C. Right Pedestal Desks 72"W x 36"D x 29 1/2"H, Shpg. Wt. 214 lbs. LLR 97110‡ Cherry/Charcoal 1373.00-EA LLR 97111‡ Mahogany/Charcoal 1373.00-EA 66"W x 30"D x 29 1/2"H, Shpg. Wt. 181 lbs. LLR 97104‡ Cherry/Charcoal 1176.00-EA LLR 97105‡ Mahogany/Charcoal 1176.00-EA 48"W x 30"D x 29 1/2"H, Shpg. Wt. 155 lbs. LLR 97114‡ Cherry/Charcoal 1128.00-EA LLR 97115‡ Mahogany/Charcoal 1128.00-EA	LIST PRICE 1373.00-EA 1373.00-EA 1176.00-EA 1176.00-EA 1128.00-EA 1128.00-EA
D	D. Double Pedestal Credenzas With Kneespace 72"W x 24"D x 29 1/2"H, Shpg. Wt. 172 lbs. LLR 97116‡ Cherry/Charcoal 1163.00-EA LLR 97117‡ Mahogany/Charcoal 1163.00-EA 60"W x 24"D x 29 1/2"H, Shpg. Wt. 154 lbs. LLR 97118‡ Cherry/Charcoal 1066.00-EA LLR 97119‡ Mahogany/Charcoal 1066.00-EA	LIST PRICE 1163.00-EA 1163.00-EA 1066.00-EA 1066.00-EA

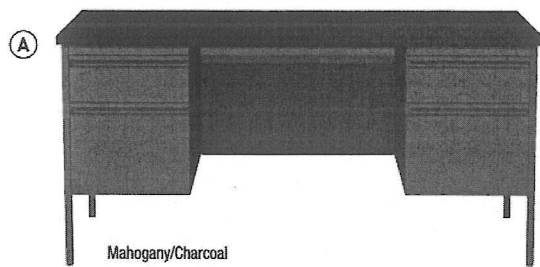
E	E. Left Pedestal Credenzas 72"W x 24"D x 29 1/2"H, Shpg. Wt. 159 lbs. LLR 97120‡ Cherry/Charcoal 1157.00-EA LLR 97121‡ Mahogany/Charcoal 1157.00-EA	LIST PRICE 1157.00-EA 1157.00-EA
F	F. Right Pedestal Credenzas 72"W x 24"D x 29 1/2"H, Shpg. Wt. 159 lbs. LLR 97122‡ Cherry/Charcoal 1157.00-EA LLR 97123‡ Mahogany/Charcoal 1157.00-EA	LIST PRICE 1157.00-EA 1157.00-EA
G	G. Left Returns 48"W x 24"D x 29 1/2"H, Shpg. Wt. 124 lbs. LLR 97136‡ Cherry/Charcoal 744.00-EA LLR 97137‡ Mahogany/Charcoal 744.00-EA	LIST PRICE 744.00-EA 744.00-EA
H	H. Right Returns 48"W x 24"D x 29 1/2"H, Shpg. Wt. 124 lbs. LLR 97138‡ Cherry/Charcoal 744.00-EA LLR 97139‡ Mahogany/Charcoal 744.00-EA	LIST PRICE 744.00-EA 744.00-EA
I	I. Bridges 48"W x 24"D, Shpg. Wt. 54 lbs. LLR 97124‡ Cherry/Charcoal 405.00-EA LLR 97125‡ Mahogany/Charcoal 405.00-EA 42"W x 24"D, Shpg. Wt. 41 lbs. LLR 97126‡ Cherry/Charcoal 395.00-EA LLR 97127‡ Mahogany/Charcoal 395.00-EA	LIST PRICE 405.00-EA 405.00-EA 395.00-EA 395.00-EA
J	J. Stack-On Hutches 72"W x 13"D x 36"H, Shpg. Wt. 86 lbs. LLR 97128‡ Charcoal 553.00-EA 60"W x 13"D x 36"H, Shpg. Wt. 78 lbs. LLR 97129‡ Charcoal 542.00-EA 48"W x 13"D x 36"H, Shpg. Wt. 67 lbs. LLR 97130‡ Charcoal 509.00-EA	LIST PRICE 553.00-EA 542.00-EA 509.00-EA
K	K. Flipper Doors For Stack-On Hutch 2 Doors at 36"W, Shpg. Wt. 35 lbs. LLR 97132‡ Charcoal 301.00-EA 2 Doors at 30"W, Shpg. Wt. 20 lbs. LLR 97134‡ Charcoal 241.00-EA 1 Door at 48"W, Shpg. Wt. 15 lbs. LLR 97135‡ Charcoal 199.00-EA	LIST PRICE 301.00-EA 241.00-EA 199.00-EA
L	L. Center Drawers With Lock 24 3/4"W, Shpg. Wt. 12 lbs. LLR 97131‡ Charcoal 162.00-EA 19"W, Shpg. Wt. 9 lbs. LLR 97133‡ Charcoal 133.00-EA	LIST PRICE 162.00-EA 133.00-EA



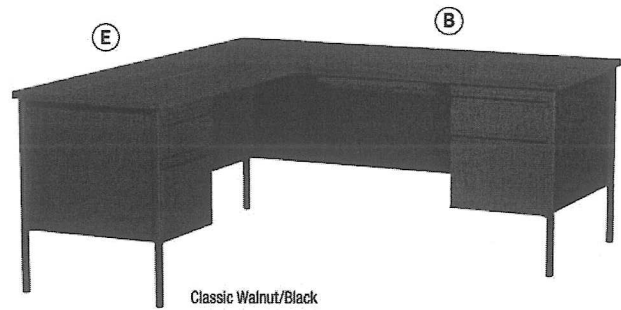
LORELL

Fortress Series Desks

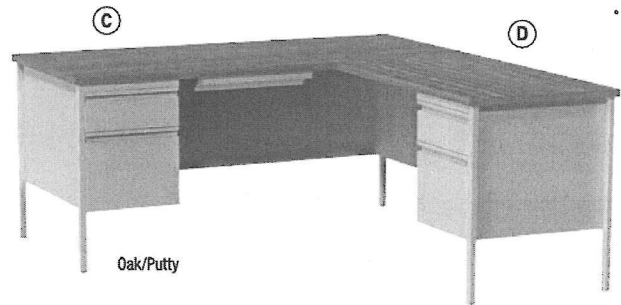
- Practical and professional desk solution ideal for business, government and educational offices
- Durable, high-performance construction stands up to rigorous daily use
- Desks feature box/file pedestals with full extension ball bearing slides, locking center drawer and integrated drawer pulls
- Central lock system locks all drawers
- Returns are non locking
- Meets or exceeds ANSI/BIFMA standards
- Contains 28% recycled content
- Greenguard Certified
- Covered by Lorell Limited Lifetime Warranty



Mahogany/Charcoal



Classic Walnut/Black



Oak/Putty



Mahogany/Charcoal

A. Double-Pedestal Desk

60" W x 30" D x 29½" H

LLR 60928†	Mahogany/Charcoal	1012.00 EA
LLR 60927†	Classic Walnut/Black	1012.00 EA
LLR 60926†	Oak/Putty	1012.00 EA

LIST PRICE
~~1012.00 EA~~
~~1012.00 EA~~
~~1012.00 EA~~

B. Right Pedestal Desk

66" W x 30" D x 29½" H

LLR 60916†	Mahogany/Charcoal	895.00 EA
LLR 66905‡	Classic Walnut/Black	895.00 EA
LLR 66904‡	Oak/Putty	895.00 EA

~~895.00 EA~~
~~895.00 EA~~
~~895.00 EA~~

C. Left Pedestal Desk

66" W x 30" D x 29½" H

LLR 60919†	Mahogany/Charcoal	895.00 EA
LLR 60918†	Classic Walnut/Black	895.00 EA
LLR 60917†	Oak/Putty	895.00 EA

~~895.00 EA~~
~~895.00 EA~~
~~895.00 EA~~

D. Right Pedestal Return

42" W x 24" D x 29½" H

LLR 60922†	Mahogany/Charcoal	629.00 EA
LLR 60921†	Classic Walnut/Black	629.00 EA
LLR 60920†	Oak/Putty	629.00 EA

~~629.00 EA~~
~~629.00 EA~~
~~629.00 EA~~

E. Left Pedestal Return

42" W x 24" D x 29½" H

LLR 60925†	Mahogany/Charcoal	629.00 EA
LLR 60924†	Classic Walnut/Black	629.00 EA
LLR 60923†	Oak/Putty	629.00 EA

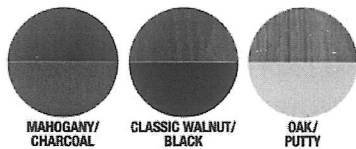
~~629.00 EA~~
~~629.00 EA~~
~~629.00 EA~~

F. 48" Right Single Pedestal Desk

48" W x 30" D x 29½" H

LLR 66903‡	Mahogany/Charcoal	783.00 EA
LLR 66902‡	Classic Walnut/Black	783.00 EA
LLR 66906‡	Oak/Putty	783.00 EA

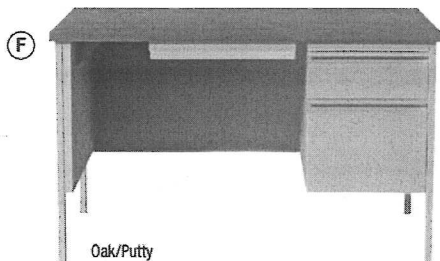
~~783.00 EA~~
~~783.00 EA~~
~~783.00 EA~~



MAHOGANY/CHARCOAL

CLASSIC WALNUT/BLACK

OAK/PUTTY



Oak/Putty

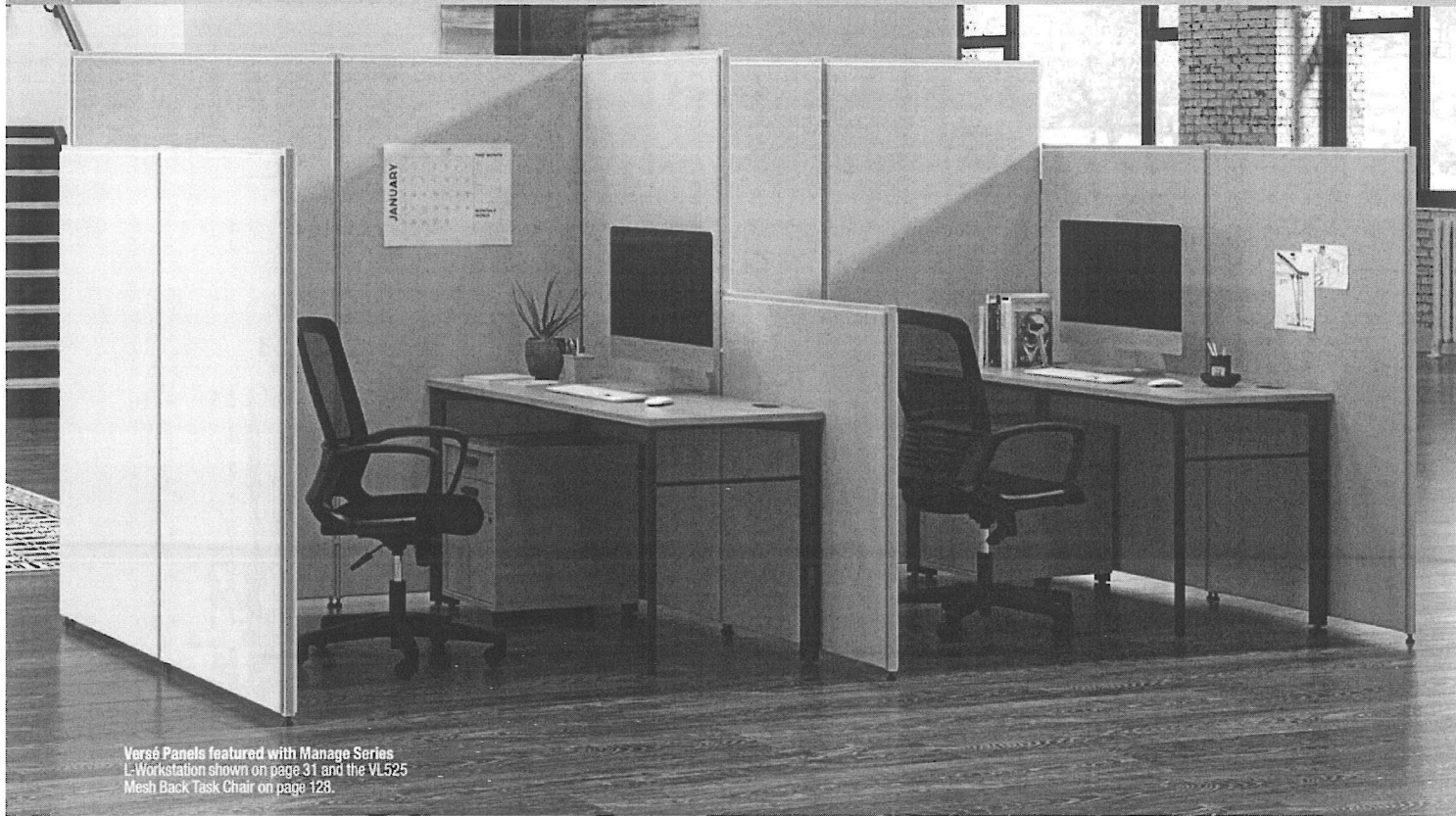
Assembly needed. Please call for details.
†Cannot be shipped UPS.
‡Cannot be shipped UPS Air. LA

FIND MORE ONLINE



FURNITURE

Office Systems – Panel Systems



Versé Panels featured with Manage Series L-Workstation shown on page 31 and the VL525 Mesh Back Task Chair on page 128.

basyx
by HON

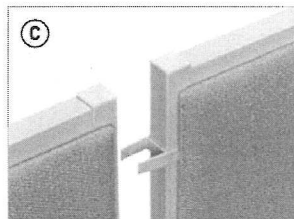


Versé Panel Systems

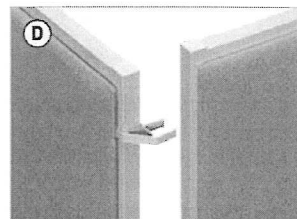
- Panel systems make the most of available space
- Connecting hardware (sold separately) allows panels to be arranged in straight, multiple-height, 90°, three-way and four-way configurations
- Semi-tackable, Gray fabric with matching powder coat steel frame
- Adjustable glides standard with all panels
- Wall bracket adjusts to 1¼" (wall connecting screws not included)
- Backed by the *basyx* by HON Limited 5-Year Warranty.



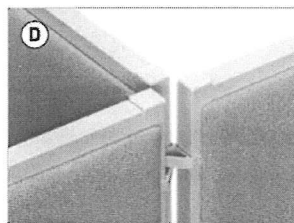
Suggested Seating
Complement your Versé workstation with the *basyx* by HON VL511 Mesh Task Chair or the *basyx* by HON VL525 Mesh Task Chair. See more seating on pages 119-128.



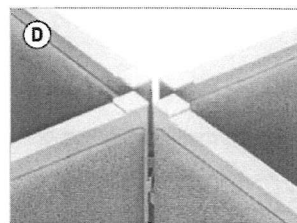
Two Panels 180°
Use one pair of 180° straight QuickConnectors.



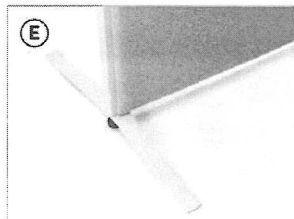
Two Panels 90°
Use one pair of 90° QuickConnectors.



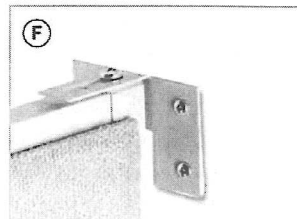
Three Panels
Use two pairs of 90° QuickConnectors.



Four Panels
Use three pairs of 90° QuickConnectors.



Stabilizing Foot
Permits *basyx* by HON Versé panels to be used as individual privacy screens.



Wall Bracket
Add stability by attaching directly to existing walls.



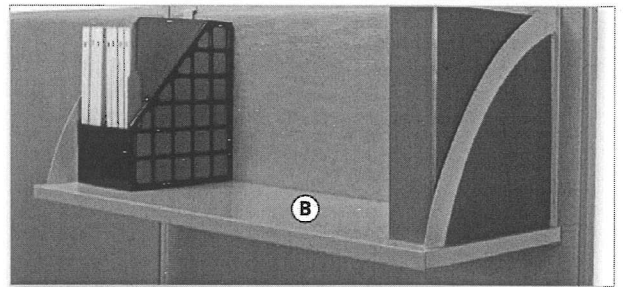
Versé Panels featured with BL Laminate Desks shown on page 28-29 and basyx by HON VL511 Mesh Back Task Chair on page 126.

A. Versé Panels

- 72"H x 60"W, Shpg. Wt. 62 lbs.
BSX P7260GYGY‡
- 72"H x 48"W, Shpg. Wt. 50 lbs.
BSX P7248GYGY‡
- 72"H x 36"W, Shpg. Wt. 44 lbs.
BSX P7236GYGY‡
- 72"H x 30"W, Shpg. Wt. 40 lbs.
BSX P7230GYGY‡
- 72"H x 24"W, Shpg. Wt. 39 lbs.
BSX P7224GYGY‡
- 60"H x 72"W, Shpg. Wt. 60 lbs.
BSX P6072GYGY‡
- 60"H x 60"W, Shpg. Wt. 54 lbs.
BSX P6060GYGY‡
- 60"H x 48"W, Shpg. Wt. 42 lbs.
BSX P6048GYGY‡
- 60"H x 36"W, Shpg. Wt. 35 lbs.
BSX P6036GYGY‡
- 60"H x 30"W, Shpg. Wt. 33 lbs.
BSX P6030GYGY‡
- 60"H x 24"W, Shpg. Wt. 30 lbs.
BSX P6024GYGY‡
- 42"H x 72"W, Shpg. Wt. 48 lbs.
BSX P4272GYGY‡
- 42"H x 60"W, Shpg. Wt. 36 lbs.
BSX P4260GYGY‡
- 42"H x 48"W, Shpg. Wt. 34 lbs.
BSX P4248GYGY‡
- 42"H x 36"W, Shpg. Wt. 24 lbs.
BSX P4236GYGY‡
- 42"H x 30"W
BSX P4230GYGY
- 42"H x 24"W
BSX P4224GYGY



- LIST PRICE
444.00-~~EA~~
- ~~401.00-~~EA~~~~
- ~~376.00-~~EA~~~~
- ~~367.00-~~EA~~~~
- ~~350.00-~~EA~~~~
- ~~420.00-~~EA~~~~
- ~~359.00-~~EA~~~~
- ~~344.00-~~EA~~~~
- ~~322.00-~~EA~~~~
- ~~321.00-~~EA~~~~
- ~~311.00-~~EA~~~~
- ~~382.00-~~EA~~~~
- ~~333.00-~~EA~~~~
- ~~309.00-~~EA~~~~
- ~~294.00-~~EA~~~~
- ~~290.00-~~EA~~~~
- ~~280.00-~~EA~~~~

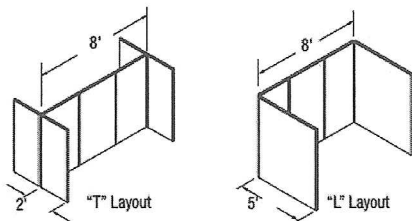


B. Hanging Shelves Hang on panel to store items within reach. Steel shelf with hanging brackets. Match shelf width to panel width. Shelves are 14½"H.

- 60"W x 12¾"D x 14½"H, Shpg. Wt. 19 lbs. LIST PRICE
BSX VSH60GYGY‡ 303.00-~~EA~~
- 48"W x 12¾"D x 14½"H, Shpg. Wt. 14 lbs. 266.00-~~EA~~
BSX VSH48GYGY
- 36"W x 12¾"D x 14½"H 216.00-~~EA~~
BSX VSH36GYGY
- 30"W x 12¾"D x 14½"H 199.00-~~EA~~
BSX VSH30GYGY
- 24"W x 12¾"D x 14½"H 178.00-~~EA~~
BSX VSH24GYGY

Versé QuickConnect Connectors Simply snap on the QuickConnect Connectors at the top and bottom of the panel and slide the panels together. There are only two types of connectors to specify for all regular and multi-height configurations!

- C. 180° Straight Connector For Straight 2-Way Layouts**
BSX QC180GY 20.00-~~PR~~
- D. 90° Connector For 2-Way/3-Way/4-Way Layouts**
BSX QC90GY 20.00-~~PR~~
- E. Base Stabilizing Foot**
BSX TBASEGY 42.00-~~EA~~
- F. Wall Bracket**
BSX PWB1GY 46.00-~~EA~~

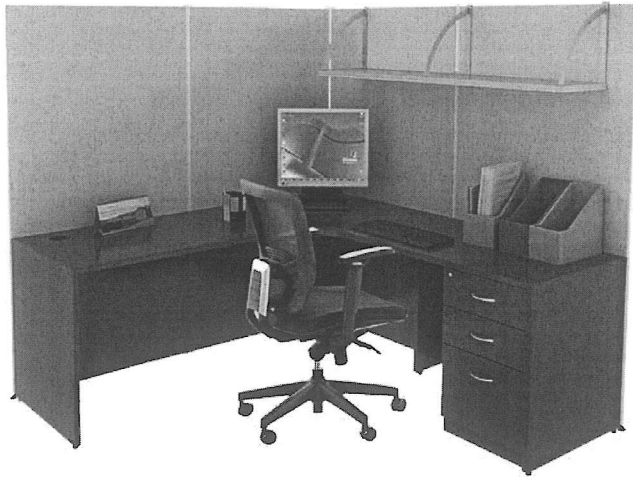


See more of Versé
11 additional fabrics and
2 frame colors available
on special order. Call us
to learn more about Versé
finishes.

Assembly needed.
Please call for details.
‡Cannot be shipped UPS.
‡‡Cannot be shipped UPS Air. LA

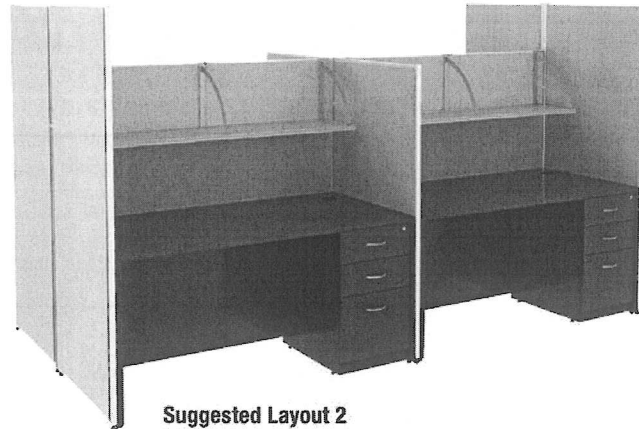
FIND MORE ONLINE

FURNITURE
Office Systems – Panel Systems



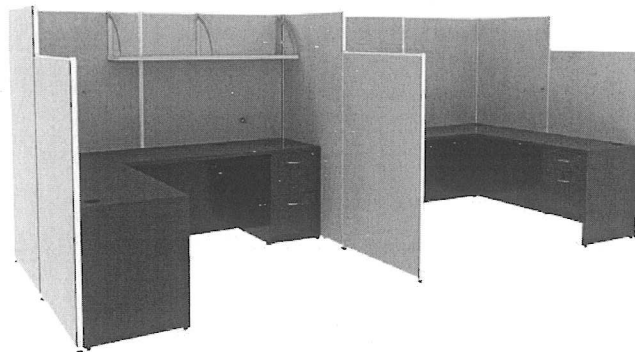
Suggested Layout 1

- LLR 90252 Fabric Panels (4)
- LLR 90259 Straight Connectors (2)
- LLR 90260 90° Connector (1)
- LLR 90263 Shelf (1)
- LLR 69906 Left Corner Credenza (1)
- LLR 69389 Rectangular Return Shell (1)
- LLR 69603 Fixed Pedestal (1)



Suggested Layout 2

- LLR 90253 Fabric Panels (4)
- LLR 90255 Fabric Panels (2)
- LLR 90258 Fabric Panels (2)
- LLR 90259 Straight Connectors (5)
- LLR 90260 90° Connector (7)
- LLR 90263 Shelves (4)
- LLR 69373 Rectangular Desk Shells (4)
- LLR 69603 Fixed Pedestals (4)



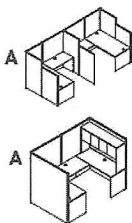
Suggested Layout 3

- LLR 90251 Fabric Panels (2)
- LLR 90252 Fabric Panels (5)
- LLR 90257 Fabric Panels (3)
- LLR 90259 Straight Connectors (5)
- LLR 90260 90° Connector (4)
- LLR 90263 Shelves (2)
- LLR 69371 Rectangular Desk Shells (2)
- LLR 69387 Rectangular Return Shells (2)
- LLR 69605 Fixed Pedestals (2)
- LLR 69398 Hanging Fixed Pedestals (2)



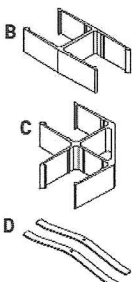
Panel Systems

- Fabric panels create just the configuration you need
- Semi-tackable gray fabric walls help block sound and provide privacy
- Each panel includes adjustable glides for better leveling
- Accessory shelf adds overhead storage and includes mounting hardware
- Versatile connectors to secure panels sold separately



A. Partitions

- 72"H x 60"W, Shpg. Wt. 82 lbs.
LLR 90250‡ LIST PRICE 406.00-EA
- 72"H x 48"W, Shpg. Wt. 66 lbs.
LLR 90251‡ 265.00-EA
- 72"H x 36"W, Shpg. Wt. 53 lbs.
LLR 90252‡ 340.00-EA
- 72"H x 30"W, Shpg. Wt. 49 lbs.
LLR 90253‡ 215.00-EA
- 60"H x 72"W, Shpg. Wt. 82 lbs.
LLR 90254‡ 375.00-EA
- 60"H x 60"W, Shpg. Wt. 68 lbs.
LLR 90255‡ 325.00-EA
- 60"H x 48"W, Shpg. Wt. 56 lbs.
LLR 90256‡ 210.00-EA
- 60"H x 36"W, Shpg. Wt. 37 lbs.
LLR 90257‡ 285.00-EA
- 60"H x 30"W, Shpg. Wt. 32 lbs.
LLR 90258‡ 280.00-EA



B. 180° Straight Panel Connector Two per set.

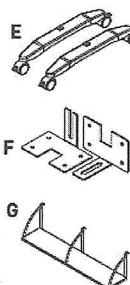
- 1½"W x 2¾"D x 1¾"H LIST PRICE 10.00-ST
- LLR 90259

C. 90° Connector Two per set.

- 2¾"W x 3¾"D x 1½"H LIST PRICE 12.00-ST
- LLR 90260

D. Panel Foot Two per set.

- 3¾"W x 19¾"D x 1¾"H LIST PRICE 45.00-ST
- LLR 90261



E. Mobile T-Foot With Casters

- 2¾"W x 20¾"D x 4¾"H LIST PRICE 69.00-ST
- LLR 69898

F. Panel Wall Brackets

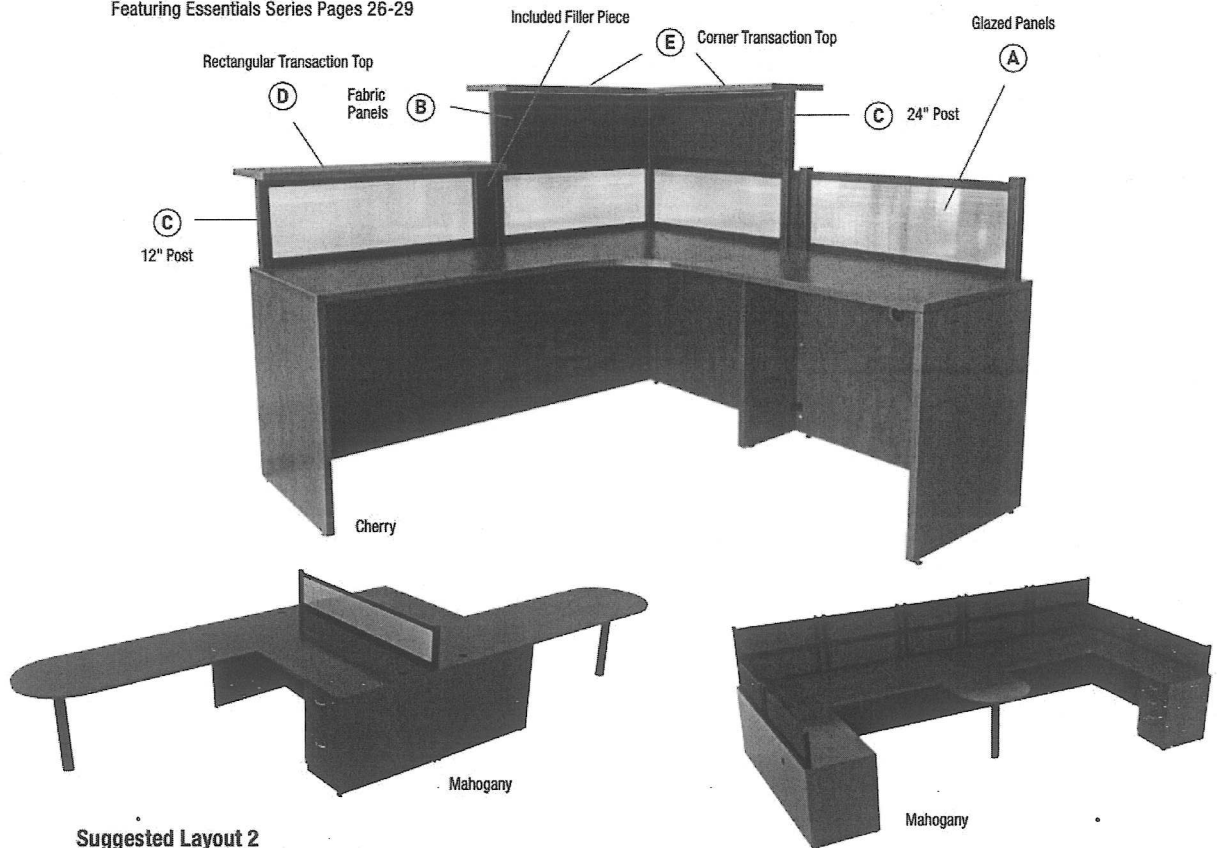
- 3¼" x 4½"D x 3¾"H LIST PRICE 15.00-ST
- LLR 90262

G. Panel Shelf

- 60"W x 12"D x 14"H LIST PRICE 150.00-EA
- LLR 90263



Suggested Layout 1
Featuring Essentials Series Pages 26-29



- Suggested Layout 2**
Featuring Essentials Series Pages 26-29
- LLR 69371 Rectangular Desk Shell (2)
 - LLR 69380 Peninsula Desk (2)
 - LLR 69381 Peninsula Post (2)
 - LLR 69605 Hanging Fixed Peninsula (2)
 - LLR 87629 Panel
 - LLR 87605 Post (2)

- Suggested Layout 3**
Featuring Essentials Series Pages 26-29
- LLR 69391 Bridge
 - LLR 69380 Peninsula Desk
 - LLR 69381 Peninsula Post
 - LLR 69376 Credenza
 - LLR 69603 Hanging Fixed Pedestals (2)
 - LLR 87610 Panel (10)
 - LLR 87609 Panel (2)
 - LLR 87612 Panel (2)
 - LLR 87605 Post (6)
 - LLR 87606 Post (10)



Desktop Panel Systems

- Provides delicate balance between privacy and interaction with colleagues
- Can be retro fitted to most workstations in a manner that allows you to define your workspace the way you want
- Mounting hardware included

A. Glazed Panels Top, bottom accessory rod and filler panels included. Glazed view-through appearance.

Product	Color	LIST PRICE
72" x 12" LLR 87629	Clear	102.00- EA
66" x 12" LLR 87628	Clear	96.00- EA
48" x 12" LLR 87627	Clear	76.00- EA
42" x 12" LLR 87626	Clear	70.00- EA
36" x 12" LLR 87625	Clear	64.00- EA
30" x 12" LLR 87624	Clear	56.00- EA
24" x 12" LLR 87623	Clear	48.00- EA

B. Fabric Panels Top, bottom accessory rod, and filler panels included. Black fabric upholstered appearance.

Product	Color	LIST PRICE
72" x 12" LLR 87614	Black	102.00- EA
66" x 12" LLR 87613	Black	97.00- EA
48" x 12" LLR 87612	Black	78.00- EA
42" x 12" LLR 87611	Black	71.00- EA
36" x 12" LLR 87610	Black	65.00- EA
30" x 12" LLR 87609	Black	58.00- EA
24" x 12" LLR 87608	Black	57.00- EA

C. Posts

Product	Color	LIST PRICE
38" Post, Three Panels High LLR 87607	Black	38.00- EA
24" Post, Two Panels High LLR 87606	Black	31.00- EA
12" Post, One Panel High LLR 87605	Black	20.00- EA

D. Rectangular Transaction Tops

Product	Color	LIST PRICE
71" x 12" LLR 87619	Mahogany	81.00- EA
LLR 87634	Cherry	81.00- EA
48" x 12" LLR 87618	Mahogany	60.00- EA
LLR 87633	Cherry	60.00- EA
42" x 12" LLR 87617	Mahogany	54.00- EA
LLR 87632	Cherry	54.00- EA
36" x 12" LLR 87616	Mahogany	48.00- EA
LLR 87631	Cherry	48.00- EA
30" x 12" LLR 87615	Mahogany	42.00- EA
LLR 87630	Cherry	42.00- EA

E. Corner Transaction Tops Each piece is reversible for left or right use. Must order 2.

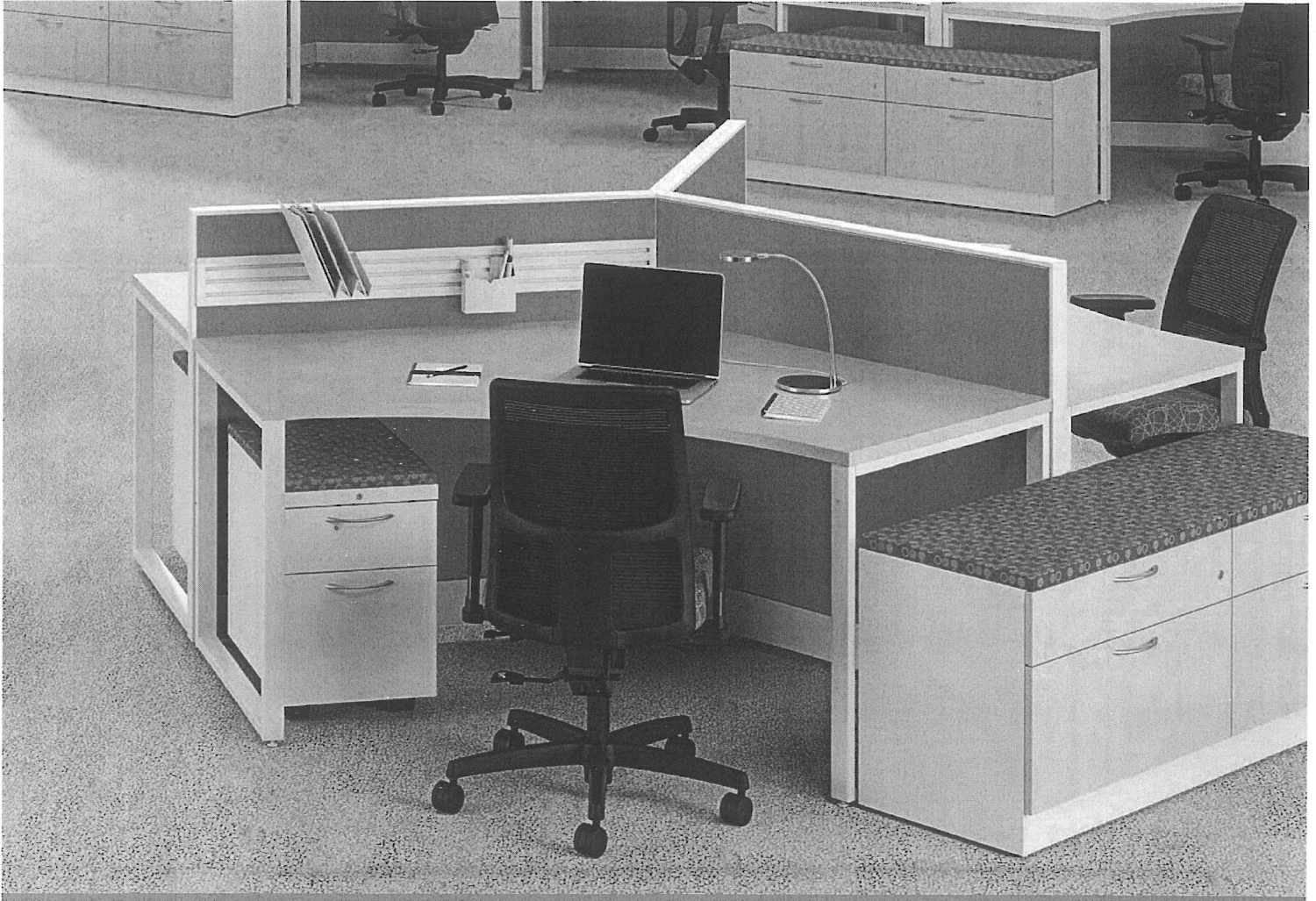
Product	Color	LIST PRICE
71" x 12" LLR 87622	Mahogany	83.00- EA
LLR 87637	Cherry	83.00- EA
42" x 12" LLR 87621	Mahogany	66.00- EA
LLR 87636	Cherry	66.00- EA
36" x 12" LLR 87620	Mahogany	60.00- EA
LLR 87635	Cherry	60.00- EA

Assembly needed. Please call for details.

‡Cannot be shipped UPS. ††Cannot be shipped UPS Air. LA

FIND MORE ONLINE

HON®

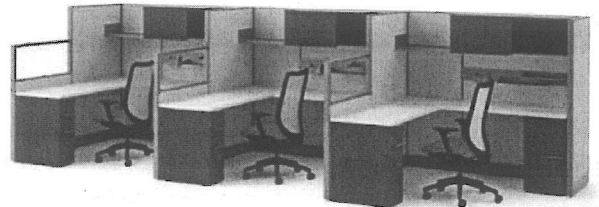


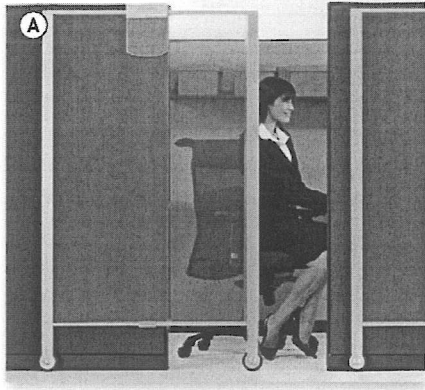
Accelerate® Panel System

Style That Performs.

Accelerate combines style, selection and quality construction to provide unparalleled value. Its high-performance design features thin profile glass panels, personal storage elements and a variety of worksurface options, all working together to provide value for years to come. Add in the confidence you'll receive from the HON Full Lifetime Warranty, and it's easy to see how Accelerate will quickly become one of your most valuable assets.

Contact your S.P. Richards Account Manager to learn more.



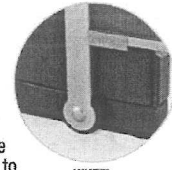


A. Workstation Privacy Screen Easy gliding door-like privacy screen. Mounts to outside of a cubicle panel system. High quality, clear polycarbonate provides glass appearance. Two wheels at the base of the aluminum H-frame design. Installs on panels 65" tall or more, from 1/4" to 3" thick. Includes nameplate to identify cubicle user and dry-erase board with marker.

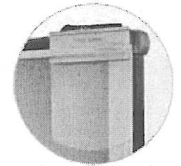
For 65" And Over Panels, includes height extenders for panel height over 68", 1 1/4"W x 38"D x 65"H, Shpg. Wt. 22 lbs.
QRT WPS2000‡ Silver
 For Under 65" Panels, 1 1/4"W x 36"D x 48"H, Shpg. Wt. 18 lbs.
QRT WPS1000‡ Silver

LIST PRICE
413.05 EA

294.73 EA



WHEEL



CORNER OF SCREEN



B. Motion Room Dividers Multi-functional as a rolling room divider, a magnetic whiteboard and bulletin board. Long lasting premium porcelain magnetic whiteboard with flipchart pad holders. Reverse side has a durable fabric bulletin surface. Graphite metal frame. Four wheels, two locking. Boards nest together for storage. Includes four Quartet markers, eraser and attachable magnetic marker tray. Lifetime Warranty.

2-Sided
 4' x 6', Shpg. Wt. 91 lbs.
QRT 6640MB‡
 3' x 6', Shpg. Wt. 73 lbs.
QRT 6630MB‡

Connector Kit
 Connects two dividers.
QRT 66C

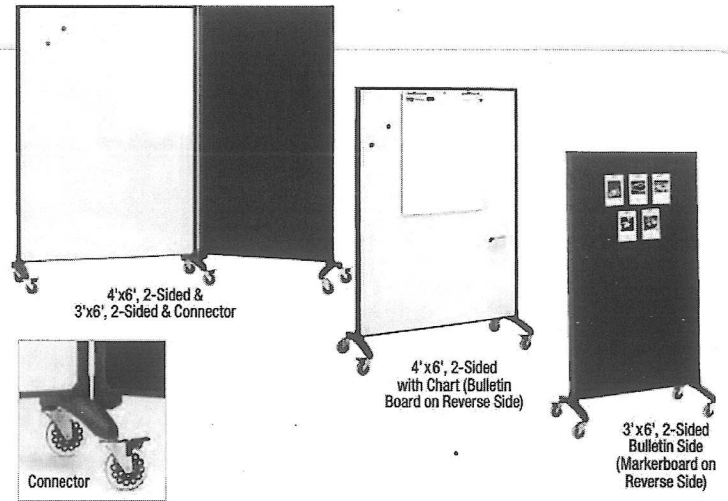
Black

LIST PRICE
1167.78 EA

977.76 EA

64.46 EA

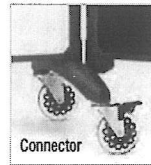
B



4'x6', 2-Sided &
3'x6', 2-Sided & Connector

4'x6', 2-Sided
with Chart (Bulletin
Board on Reverse Side)

3'x6', 2-Sided
Bulletin Side
(Marker Board on
Reverse Side)



Connector



C. DOC Mobile Partitions Divide, organize and customize any workspace or display area. Double-sided partitions are available with either porcelain steel dry-erase markerboard or Dura Rite high-pressure laminate dry-erase markerboard available on both sides. The leg design allows panels to be joined together and plastic connectors are included to join the panels together in a variety of angles. Includes four locking casters for mobility.

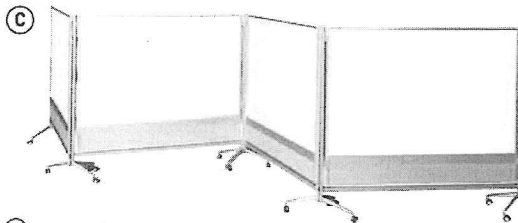
76"W x 12"D x 74"H, Shpg. Wt. 180 lbs.
BLT 74762‡
 76"W x 12"D x 74"H, Shpg. Wt. 140 lbs.
BLT 74764‡

6' x 6' White Porcelain

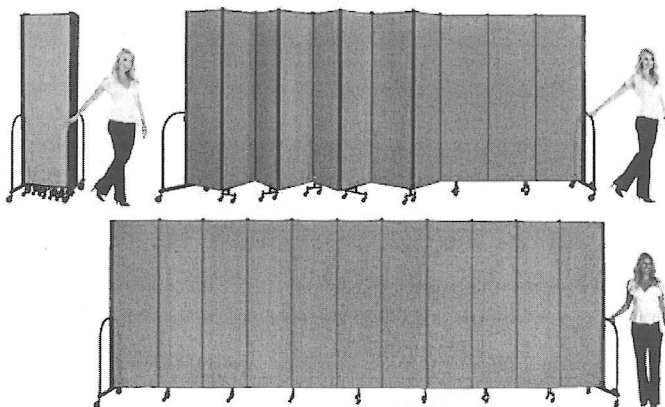
6' x 6' White Dura Rite

LIST PRICE
1156.82 EA

817.62 EA



D



D. 6 Foot High Gray Fabric Dividers Portable partitions optimize even limited space. Sound-absorbing panels. Fabric treated with Blockaide Fabric Protector. Multiple freestanding units can be locked together to form unlimited length. Position control hinges. Self-leveling casters. Contains 76% recycled content. Lifetime Warranty. No assembly or installation required.

24" Length, Shpg. Wt. 198 lbs.
SCX CFSL6013D6‡
 20" Length, Shpg. Wt. 178 lbs.
SCX CFSL6011D6‡
 13" Length, Shpg. Wt. 138 lbs.
SCX CFSL607D6‡

LIST PRICE
2922.00 EA

2505.00 EA

1912.00 EA

Assembly needed. Please call for details.

‡Cannot be shipped UPS.

‡‡Cannot be shipped UPS Air. LA

FIND MORE ONLINE

FURNITURE
Sit-To-Stand – Workstations

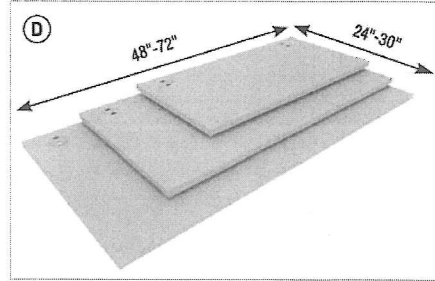


D



THREE STAGE BASE
Largest range and workload for maximum performance

A



D

D. Voi Rectangle Worksurfaces

Recommended for HON Coordinate and *basyx* by HON Adjustable-Height Bases.

72"W x 24"D, Shpg. Wt. 89 lbs.	Brilliant White	LIST PRICE
HON VTR72BW#		393.00 EA
72"W x 30"D, Shpg. Wt. 110 lbs.	Brilliant White	LIST PRICE
HON VTR72CW#		462.00 EA
60"W x 24"D, Shpg. Wt. 75 lbs.	Brilliant White	LIST PRICE
HON VTR60BW		343.00 EA
60"W x 30"D, Shpg. Wt. 92 lbs.	Brilliant White	LIST PRICE
HON VTR60CW#		390.00 EA
48"W x 24"D, Shpg. Wt. 54 lbs.	Brilliant White	LIST PRICE
HON VTR48BW		253.00 EA



BRILLIANT WHITE

HON.

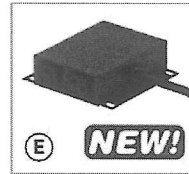


A. Coordinate Adjustable-Height Base Adjustable-height base attaches to a worksurface to create a table that rises from 23 $\frac{3}{4}$ " to 49 $\frac{1}{4}$ " to support sit-to-stand desk applications. Telescopes to accommodate any worksurface between 48" wide and 72" wide and ranging from 24" deep to 30" deep. 78" cord for easy access to floor or wall outlets. Maximum load capacity is 300 lbs. when operating. Order VOI Rectangle Worksurface separately. Backed by the HON Full Lifetime Warranty.

46 $\frac{1}{2}$ "-72"W x 23 $\frac{3}{4}$ "D x 23 $\frac{3}{4}$ "-49 $\frac{1}{4}$ "H, Shpg. Wt. 80 lbs.
HON HAB3S24F

Silver

LIST PRICE
~~1250.00~~ EA



E



F

E. Power Module Features four standard outlets to power up your devices. Attaches to underside of worksurface for convenient cord management. 10 ft. cord.

HON HPWRMOD2 Black

LIST PRICE
~~326.00~~ EA

F. Casters For Adjustable-Height Table Bases Replaces standard glides on HON Coordinate and *basyx* by HON Adjustable-Height Table Bases. Packed four.

HON HABCASTER Black

LIST PRICE
~~65.00~~ EA



B

B. Optional Memory Control Attaches to a Coordinate Adjustable-Height Base and rises to one of four programmable heights. Digital display clearly shows the current height in inches. This advanced memory control replaces the standard pre-installed control.

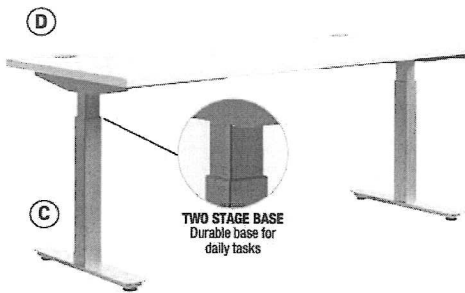
4"W x 1 $\frac{1}{2}$ "D x $\frac{3}{4}$ "H
HON HABMEM

Black

LIST PRICE
~~75.00~~ EA



basyx
by HON



D

C

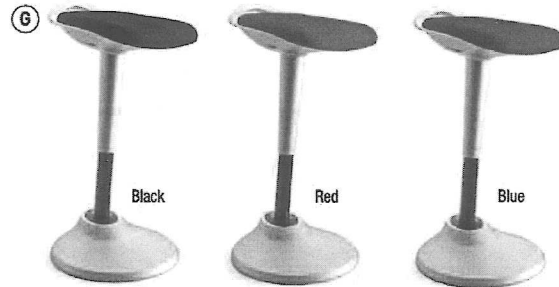
TWO STAGE BASE
Durable base for daily tasks

C. Adjustable-Height Base Adjustable-height base attaches to a worksurface to create a table that moves from 28 $\frac{3}{4}$ " high to 48 $\frac{3}{4}$ " high to support sit-to-stand desk applications. Telescopes to accommodate any worksurface between 48" wide and 72" wide and ranging from 24" deep to 30" deep. Electronic adjustable-height controller ships with table base. 78" cord for easy access to floor or wall outlets. Adjustable columns of 14-gauge precision steel. Maximum load capacity is 250 lbs. when operating. Order VOI Rectangle Worksurface separately. Backed by the *basyx* by HON Limited 5-Year Warranty.

46 $\frac{1}{2}$ "-72"W x 23 $\frac{3}{4}$ "D x 28 $\frac{3}{4}$ "-48 $\frac{3}{4}$ "H, Shpg. Wt. 77 lbs.
BSX HAB2S24F

Silver

LIST PRICE
~~1400.00~~ EA



G

Black

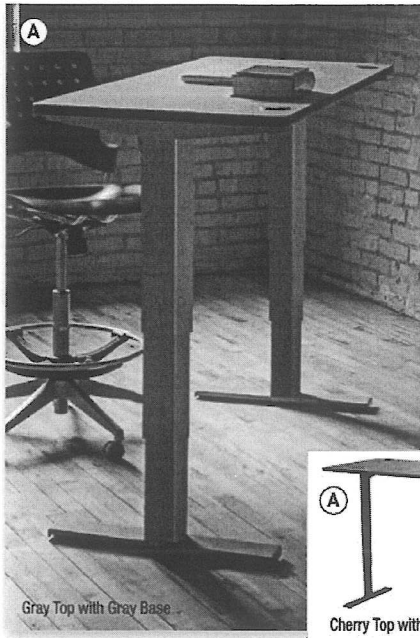
Red

Blue

basyx
by HON

G. Perch Chairs Active seating solution that supports seated and standing-height positions to keep you energized and productive all day. Pivoting base tilts forward to bring you closer to work while maintaining a healthy posture. Adjust the seat height with the touch of a button. Backed by the *basyx* by HON Limited 5-Year Warranty.

15 $\frac{1}{2}$ "W x 16 $\frac{1}{2}$ "D x 37 $\frac{3}{4}$ "H		LIST PRICE
BSX VLPERCHAS10X	Black	399.00 EA
BSX VLPERCHAS42X	Red	399.00 EA
BSX VLPERCHAS90X	Blue	399.00 EA



A. Electric Adjustable-Height Tables Dual motors adjust worksurface from 24½" to 50"H (including 1" worksurface) at 1.5" per second. Allows easy transition from sitting to standing position while working. Soft start/stop control and quiet motors. Tabletops are made from 1" high-pressure laminate with 3mm T-molded edge and available in 24" or 30" depth and 48", 60" or 72" width. Includes two cable grommets for cord management. Telescoping base fits tabletops 48"-72" wide and includes digital handset with four memory presets. Steel base with powder coat finish. Rated up to 353 lbs. Limited Lifetime Warranty. Order Tabletop and Base separately.

Table Bases

42½"-74" W x 23"D x 23"-49"H, Shpg. Wt. 68 lbs.		LIST PRICE
SAF 1909GR	Gray	1200.00-EA
SAF 1909BL	Black	1200.00-EA

72"W Tabletops

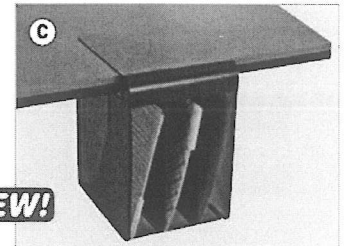
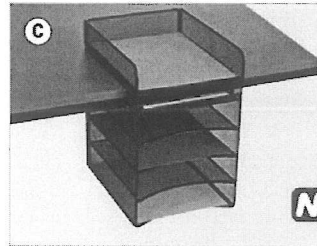
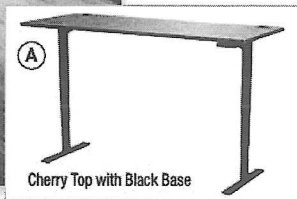
72"W x 30"D x 1"H, Shpg. Wt. 60 lbs.		
SAF 1893CY‡	Cherry	380.00-EA
SAF 1893GR‡	Gray	380.00-EA
72"W x 24"D x 1"H, Shpg. Wt. 60 lbs.		
SAF 1891CY‡	Cherry	325.00-EA
SAF 1891GR‡	Gray	325.00-EA

60"W Tabletops

60"W x 30"D x 1"H, Shpg. Wt. 46 lbs.		LIST PRICE
SAF 1892CY‡	Cherry	345.00-EA
SAF 1892GR‡	Gray	345.00-EA
60"W x 24"D x 1"H, Shpg. Wt. 46 lbs.		
SAF 1890CY‡	Cherry	290.00-EA
SAF 1890GR‡	Gray	290.00-EA

48"W Tabletops

48"W x 24"D x 1"H, Shpg. Wt. 41 lbs.		
SAF 1894CY	Cherry	250.00-EA
SAF 1894GR	Gray	250.00-EA



Hanging Organizer

Solid Top Vertical Hanging

C. Onyx Hanging Organizers Great for sit-to-stand organization. Steel mesh design. Durable, black powder coat finish. Fits 1½" maximum tabletop thickness.

10"W x 12½"D x 14¾"H	
SAF 3240BL	
SAF 3243BL	

Hanging Organizer
Solid Top Vertical Hanging

LIST PRICE
68.00-EA
62.00-EA

B. Power Module

With USB Fits into a standard 60mm grommet hole. Four electric outlets and two USB charging ports (2 amp max.). Includes eight foot power cord and surge suppression with indicator light. UL and cUL listed. Limited Lifetime Warranty.



SAF 2069BL	Black	LIST PRICE
		99.00-EA

NEW!



D. Anti-Fatigue Mat

Molded glides on bottom allowing for mobility. Ability to grip with foot to slide out of way when not in use.

20"W x 30"D x ¾"H, Shpg. Wt. 4 lbs.	
SAF 2110BL	Black

LIST PRICE
79.00-EA

E. Adjustable-Height Footrest Ergonomically designed footrest enhances comfort and relieves strain and muscle fatigue. Pairs perfectly with a standing height workstation or table. Steel and aluminum construction with black nylon platform. Platform is 20"W x 12"D with adjustable height from 3½" to 16".

NEW!



20"W x 14½"D x 21½"H	
SAF 2129BL	

Black

LIST PRICE
168.00-EA



NEW!

Electric Adjustable-Height Teaming Tables Provides an option for stand-up or sit-down meetings. Tabletop adjusts from 24½" to 50" high. Soft start/stop control and quiet motor. Four programmable settings and digital display. Powder coat finish for durability. Supports up to 353 lbs. Limited Lifetime Warranty. Tops and bases sold separately.

F. Table Bases

74"W x 27½"D x 23"-49"H		LIST PRICE
SAF 1900GR	Gray	1250.00-EA
SAF 1900BL	Black	1250.00-EA

G. 84"W Tabletops

84"W x 42"D x 1"H		
SAF 2503EHATCY‡	Cherry	562.00-EA
SAF 2503EHATGR‡	Gray	562.00-EA

H. 72"W Tabletops

72"W x 36"D x 1"H		LIST PRICE
SAF 2500EHATCY‡	Cherry	408.00-EA
SAF 2500EHATGR‡	Gray	408.00-EA



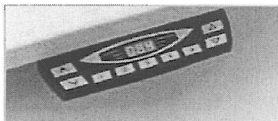
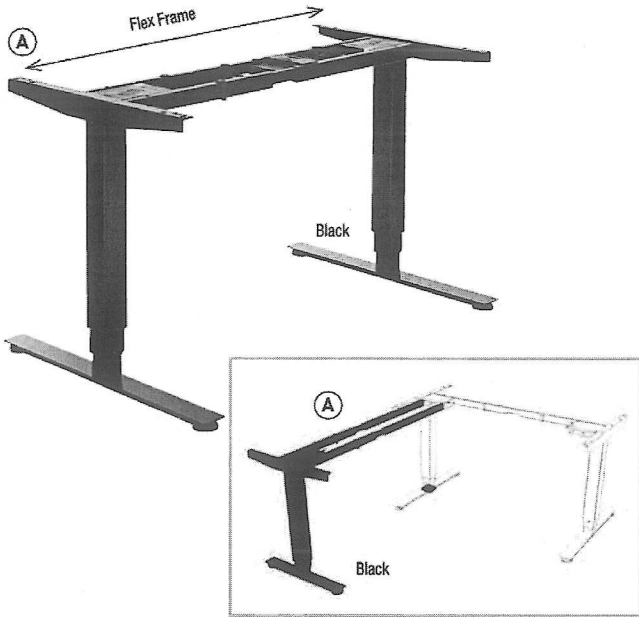
Cherry Top with Gray Base

Assembly needed. Please call for details.

‡Cannot be shipped UPS.
‡‡Cannot be shipped UPS Air. LA

FIND MORE ONLINE

FURNITURE
Sit-To-Stand – Workstations



Included Memory Controller on Three-Tier Extended Height Base



LORELL

Quadro Electric Adjustable-Height Workstations Adjustable-height workstations to accommodate different users. Alternate between sitting and standing. Dual motor for synchronized and precise compensation for uneven loads. Smooth quiet movement. Adjustment speed 1.3" per second. Built-in temperature and overload sensors. ISP (intelligent system protection) anti-collision safety feature. Flex Frame adjusts for 48" to 72" wide table tops. Maximum weight capacity 275 lbs. Covered by Lorell Limited 5-Year Warranty.



A. Three-Tier Extended-Height Base With Included Memory

Controller Includes digital display controller with built-in memory modules. For use with 24"-30" tops.

44"W x 27½"D x 24"-50"H		LIST PRICE
LLR 25992	Black	1325.00-EA
LLR 25993	Silver	1325.00-EA

Three-Tier Third Leg Add-On Kit To Make L-Shaped Desk **NEW!**

For use with 24"-30" tops

44"W x 24"D x 24"-50"H		1089.00-EA
LLR 99852	Black	1089.00-EA
LLR 99853	Silver	1089.00-EA



B. Two-Tier Extended-Height Base Button controller with up/down switch.

For use with 24"-30" tops.

44"W x 27½"D x 27"-46"H		1109.00-EA
LLR 25994	Black	1109.00-EA
LLR 25995	Silver	1109.00-EA

Two-Tier Extended-Height Base With Narrow Feet

For use with 24" tops.

44"W x 20"D x 27"-46"H		1089.00-EA
LLR 25988	Black	1089.00-EA
LLR 25989	Silver	1089.00-EA

Two-Tier Third Leg Add-On Kit To Make L-Shaped Desk **NEW!**

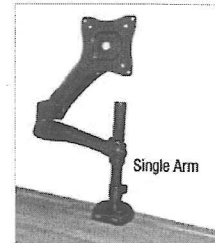
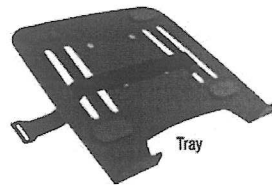
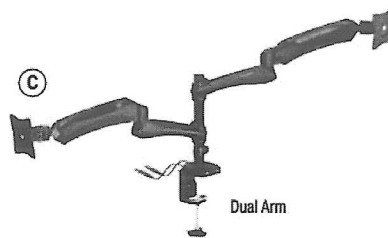
For use with 24"-30" tops

44"W x 24"D x 27"-46"H		967.00-EA
LLR 99850	Black	967.00-EA
LLR 99851	Silver	967.00-EA

C. Monitor Desktop Mounts USB ports for charging and connecting electronic devices. Gas spring counter-balance arms fully rotate and adjust. Dual arm monitor mount accommodates two monitors or one monitor and laptop with included tray.

Dual Arm 19"W x 4½"D x 16"H		369.00-EA
LLR 25996	Black	369.00-EA

Single Arm 10¾"W x 4½"D x 16"H		233.00-EA
LLR 25990	Black	233.00-EA





LORELL



D. Premium Knife Edge Table Tops Compatible with electric height-adjustable bases. Covered by Lorell Limited 5-Year Warranty.

Top is 72"W x 30"D		LIST PRICE
LLR 59613‡	Mahogany	262.00- EA
LLR 59614‡	Walnut	262.00- EA
60"W x 30"D		
LLR 59615‡	Mahogany	226.00- EA
LLR 59616‡	Walnut	226.00- EA
60"W x 24"D		
LLR 59611	Mahogany	176.00- EA
LLR 59612	Walnut	176.00- EA
48"W x 24"D		
LLR 59609	Mahogany	139.00- EA
LLR 59610	Walnut	139.00- EA



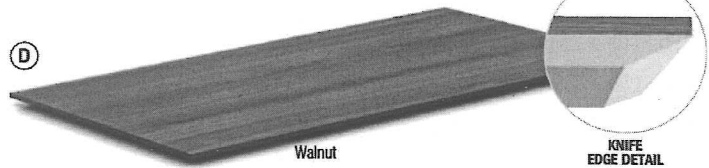
E. Standard Table Tops With Matching PVC Edgeband Compatible with electric height-adjustable bases. Covered by Lorell Limited 5-Year Warranty.

72"W x 30"D		
LLR 34405‡	Mahogany	159.00- EA
LLR 34406‡	Cherry	159.00- EA
LLR 34407‡	Walnut	159.00- EA
LLR 34408‡	Espresso	159.00- EA
LLR 34409‡	Latte	159.00- EA
72"W x 24"D		
LLR 59607‡	Mahogany	139.00- EA
LLR 59631‡	Cherry	139.00- EA
LLR 59632‡	Walnut	139.00- EA
LLR 59633‡	Espresso	139.00- EA
LLR 59608‡	Latte	139.00- EA
60"W x 24"D		
LLR 59605	Mahogany	120.00- EA
LLR 59634	Cherry	120.00- EA
LLR 59635	Walnut	120.00- EA
LLR 59636	Espresso	120.00- EA
LLR 59606	Latte	120.00- EA
48"W x 24"D		
LLR 59603	Mahogany	96.00- EA
LLR 59637	Cherry	96.00- EA
LLR 59638	Walnut	96.00- EA
LLR 59639	Espresso	96.00- EA
LLR 59604	Latte	96.00- EA



Shown with Château in Walnut on page 20

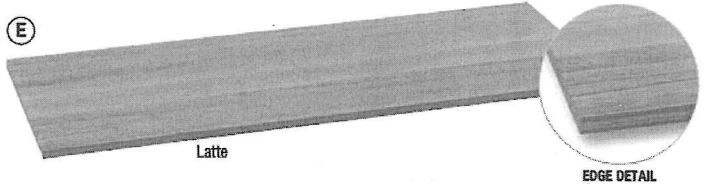
D



Walnut

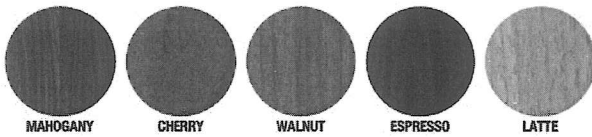
KNIFE EDGE DETAIL

E



Latte

EDGE DETAIL



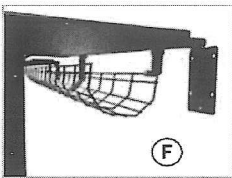
MAHOGANY

CHERRY

WALNUT

ESPRESSO

LATTE



F

F. Cable Tray Wireform tray mounts under desk. Manage, consolidate and hide all computer and electronic cables under the desktop. Mounting kit includes hardware to mount cable tray and optional privacy/modesty panel.

5 1/2"W x 36 1/2"L x 4 1/2"H	LIST PRICE
LLR 25991 Black	92.50- EA

Assembly needed. Please call for details.

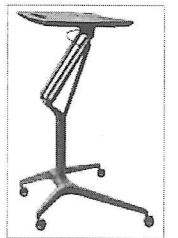
‡Cannot be shipped UPS.
‡‡Cannot be shipped UPS Air. LA



G. Adjustable-Height Mobile Desks Laminate top laptop caddy includes an ipad holder and cup/pencil holder. Steel tube aluminum base with powder coat finish. Height adjusts using gas lift. Four casters, two with brakes for mobility. Covered by Lorell Limited 5-Year Warranty.

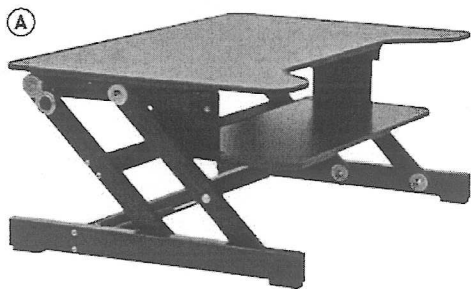
28 1/2"W x 18 1/2"D x 28 3/4"-41"H	LIST PRICE
LLR 84838 Silver/Black	399.00- EA
LLR 84839 Silver/Mahogany	399.00- EA

G



FIND MORE ONLINE

FURNITURE
Sit-to-Stand - Workstations



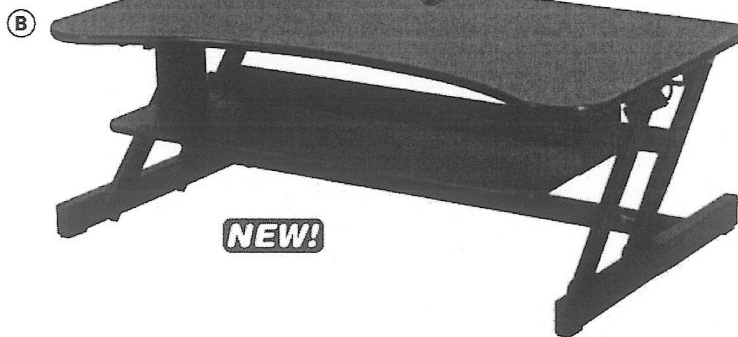
LORELL

A. Adjustable Desk Riser Five height adjustments, up to 16" above desk, for sitting or standing. Large 32" x 20½" work surface has room for two monitors or monitor and laptop. Adjustable ergonomic keyboard tray 23½"W x 12½"D also holds most laptops. Fully assembled. Covered by Lorell Limited 5-Year Warranty.

34½"W x 27"D x 9"H
LLR 81974

Black

LIST PRICE
399.00-EA



NEW!

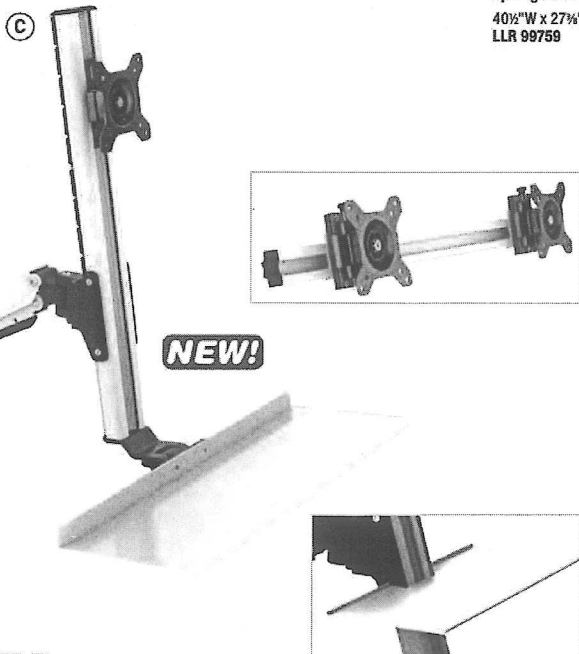
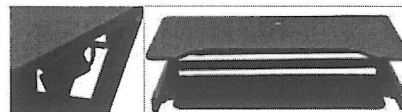
LORELL

B. Deluxe Sit-To-Stand Desk Riser Stable, sturdy design converts any desk or table into a Sit-to-Stand desk that will raise your work surface over 16". Extra large 37½" x 20½" worksurface with thicker top and grommet will easily accommodate two large monitors or monitor arm. Extra-wide retractable keyboard tray accommodates a large keyboard and full-size mouse, and extends to the most ergonomic position. Front side handles and gas springs allow for easy height adjustment. Covered by Lorell Limited 5-Year Warranty.

40½"W x 27¾"D x 9¾"H
LLR 99759

Black

LIST PRICE
569.00-EA



NEW!

LORELL

C. Deluxe Ergonomic Floating Sit-to-Stand Desk Riser Converts any desk or table into a Sit-to-Stand desk. Attach to back, side or middle. Switching from sitting to standing, whenever you desire, is healthier, burns calories and makes you feel better. One-touch movement to adjust workspace from sitting to standing position. Extremely sturdy design with large keyboard and mouse tray that swings out of the way when not in use. Total height will adjust from 26" to 36" and the desk riser will extend from 20" to 33" from the mounting point. Covered by Lorell Limited 5-Year Warranty.

26"W x 20"D x 26"H
LLR 99761

Black/Silver

LIST PRICE
479.00-EA

Dual Monitor Arm Adapter
5"W x 3½"D x 27"H
LLR 99762

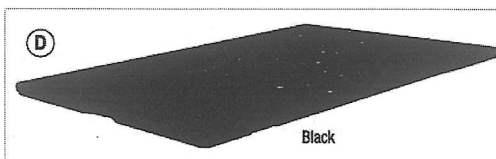
Black/Silver

119.00-EA

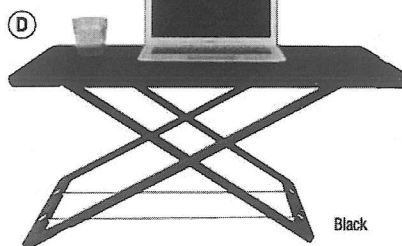
Accessory Tray
16"W x 6"D x ½"H
LLR 99763

Black

29.00-EA



Black



Black

NEW!



White

LORELL

D. Slim Adjust Desk Riser Nine height adjustments, up to 17" above desk and less than 1" thick in bottom position. Large 32" x 21" work surface area with 33 lbs. maximum load. Lightweight design for easy portability. Weighs only 12 lbs. Great for additional standing workspace anywhere you need it. Covered by Lorell Limited 5-Year Warranty.

36"W x 22"D x 1½"H
LLR 99854
LLR 99855

White
Black

LIST PRICE
299.00-EA
299.00-EA